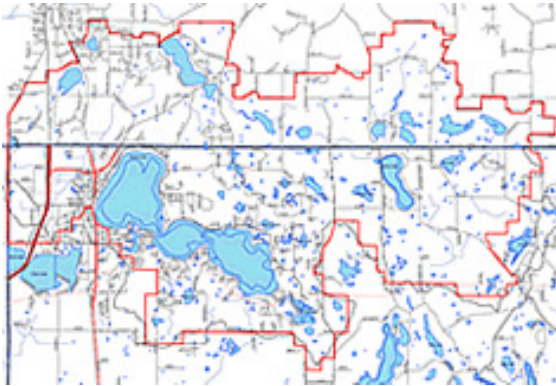


WHO IS THE CLFLWD AND WHAT DO THEY DO?

The Comfort Lake - Forest Lake Watershed District (CLFLWD) encompasses roughly 47 square miles in northern Washington and southern Chisago counties, including the Cities of Chisago City, Forest Lake, Scandia, Wyoming, and Wyoming Township. The watershed outlets to the northwest to the Sunrise River, which flows northeast through Chisago County before discharging to the St. Croix River.



The District was formed in 1999 to address water quality (7 of the District's lakes are listed as impaired due to excessive phosphorus) and quantity issues throughout the watershed. In order to address issues and remediation needs, the District has used a four phase approach: 1) educate the public on issues and how they can be part of solution, 2) continually monitor resources in an adaptive management approach to evaluate the resources and project/program successes, 3) model watershed hydrology and nutrient loading in order to better design and site projects that will address the needs of its water resources (the District feels that this provides a scientific and fiscally responsible way to develop a capital improvement plan (CIP) to ensure project success, and water quality improvements), and 4) undertake projects in its adopted CIP to remediate impairments throughout the watershed.

HOW IS THE CLFLWD FUNDED?

The CLFLWD is funded through the collection of tax dollars on residences within the boundaries of the watershed, through the successful receipt of private and public grants, through loans and bonds, through assessments to fund specific projects, and through permit/project/review fees collected.

Tax dollars are collected from watershed residents through general fund, basic water management project and metropolitan surface water management act implementation levies pursuant to Minnesota Statutes.

In 2008, the CLFLWD assessed a levy of \$307,500 (total budget of \$430,666). On an annual basis, residents' assessments in 2008 were approximately \$36.45 on a \$250,000 home. In 2009, the District will be initiating two projects to address water quality impairments, resulting in a proposed increase in levies assessed to a total levy of \$754,458 (total budget of \$878,876). On an annual basis, residents' assessments in 2009 are estimated to be approximately \$92.40 on a \$250,000 home (or \$7.70 a month).

Approximate annual tax levy per residence*

	Value of residence	
	\$250,000	\$500,000
2008	\$ 36.45/yr (\$3.04/mo)	\$ 72.90/yr (\$6.08/mo)
2009	\$ 92.40/yr (\$7.70/mo)	\$ 184.80/yr (\$15.40/mo)

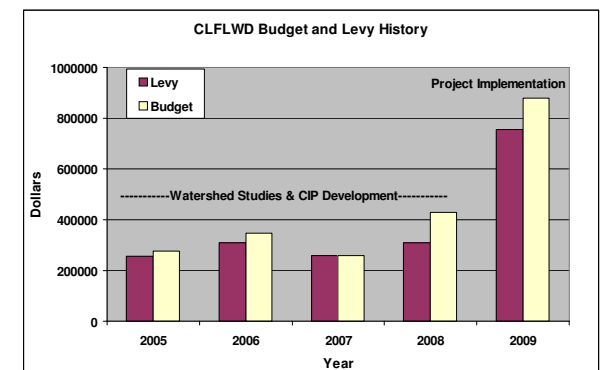
* based upon 2008 net tax capacity figures provided by Washington County

OTHER FUNDING SOURCES OF CLFLWD

The CLFLWD actual annual budgets are generally greater than that of the District levy. In order to make the best use of District funds, and reduce tax burdens to watershed residents, the District is continually researching and applying for grants to reduce costs of water quality monitoring, education, cost-share incentive programs, and individual projects detailed in the District's capital improvement plan (CIP). As CLFLWD starts to implement projects in its CIP to address water quality impairments, the need for outside funding sources will become greater. It is the intention of the CLFLWD to partner with local counties and cities and leverage tax dollars by actively seeking grants from private and public sources to subsidize project costs and therefore reducing the tax burden of its watershed residents.

CLFLWD BUDGET AND LEVY HISTORY

The figure below provides a recent history of the District's past budgets, levies, and grants. It is important to note, that as the District moves into the project oriented phase of its Plan; it is the intention of the District to have future levies remain relatively flat.



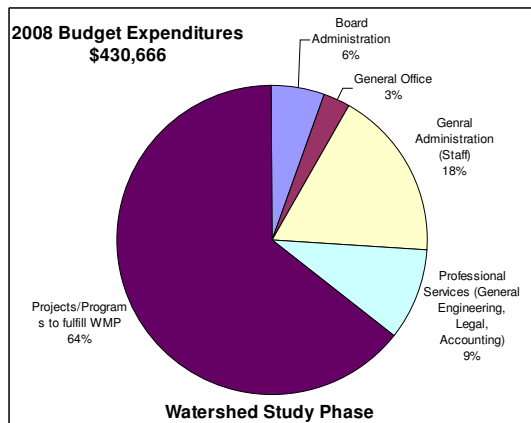
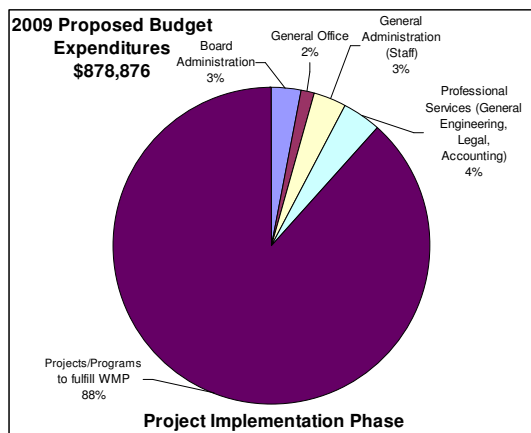
*All available grant dollars for 2009 are not known at this time

HOW ARE CLFLWD TAX DOLLARS BEING SPENT?

The charts below show the breakdown of District expenditures in 2008 and 2009 based upon District budgets. The proposed increases in the 2009 levy, over that of 2008, are all to implement projects/programs needed to fulfill requirements of the District's Watershed Management Plan, and remediate water quality impairments (i.e. capital projects, cost-share incentives, monitoring and education).

In fact, the actual administrative costs in the 2009 proposed budget are a third less than those of the 2008 budget, even though the proposed budget is nearly doubled.

The vast majority of the proposed budget and resulting levy increase in 2009 is for the implementation of two projects to reduce nutrient loading and remediate water quality impairments.



PLEASE CONTACT US

Contact us! Give us a call or visit the District's website at www.clflwd.org to learn about the latest watershed happenings. Project information, meeting details, annual reports, press releases and more can be found on the site.

The District also has a variety of programs available for the public.

BMP GRANTS

- The District offers grants up to \$ 2,000 for water quality best management practices (BMP) projects such as native shoreland plantings and rain gardens. More information, as well as applications, can be downloaded from the District's website.

EDUCATION

- The District annually offers a free "Planting for Clean Water" workshop and nitrate testing clinic. The purpose for the educational opportunities are to educate residents how to create native buffers and gardens that look beautiful, stabilize shorelines, work to keep the water clean, and to identify nitrate levels in the water supply of District residents. More information on District sponsored workshops can be found on the District website.

VOLUNTEER PROGRAMS

- The District annually monitors the quality of its water resources. As part of its monitoring program, the District is often looking for volunteers to check transparency of lakes and streams and collect in-lake water samples as part of a volunteer lake monitoring network entitled Citizen-Assisted Monitoring Program (CAMP).

CITIZEN INVOLVEMENT

- The District is continually seeking individuals to participate in the District's Citizen Advisory Committee (CAC).

For more information please contact
District Administrator/Limnologist
Randy Anhorn, 651.209.9753
randy.anhorn@clflwd.org

THE COMFORT LAKE - FOREST LAKE WATERSHED DISTRICT

BUDGETS AND LEVIES



Comfort Lake–Forest Lake Watershed District
220 North Lake Street
Forest Lake, MN 55025
Ph: 651.209.9753
Fax: 651.209.9752
Email: randy.anhorn@clflwd.org
Website: www.clflwd.org