

BONE LAKE

Fast Facts:

DNR Lake ID: 82-0054-00

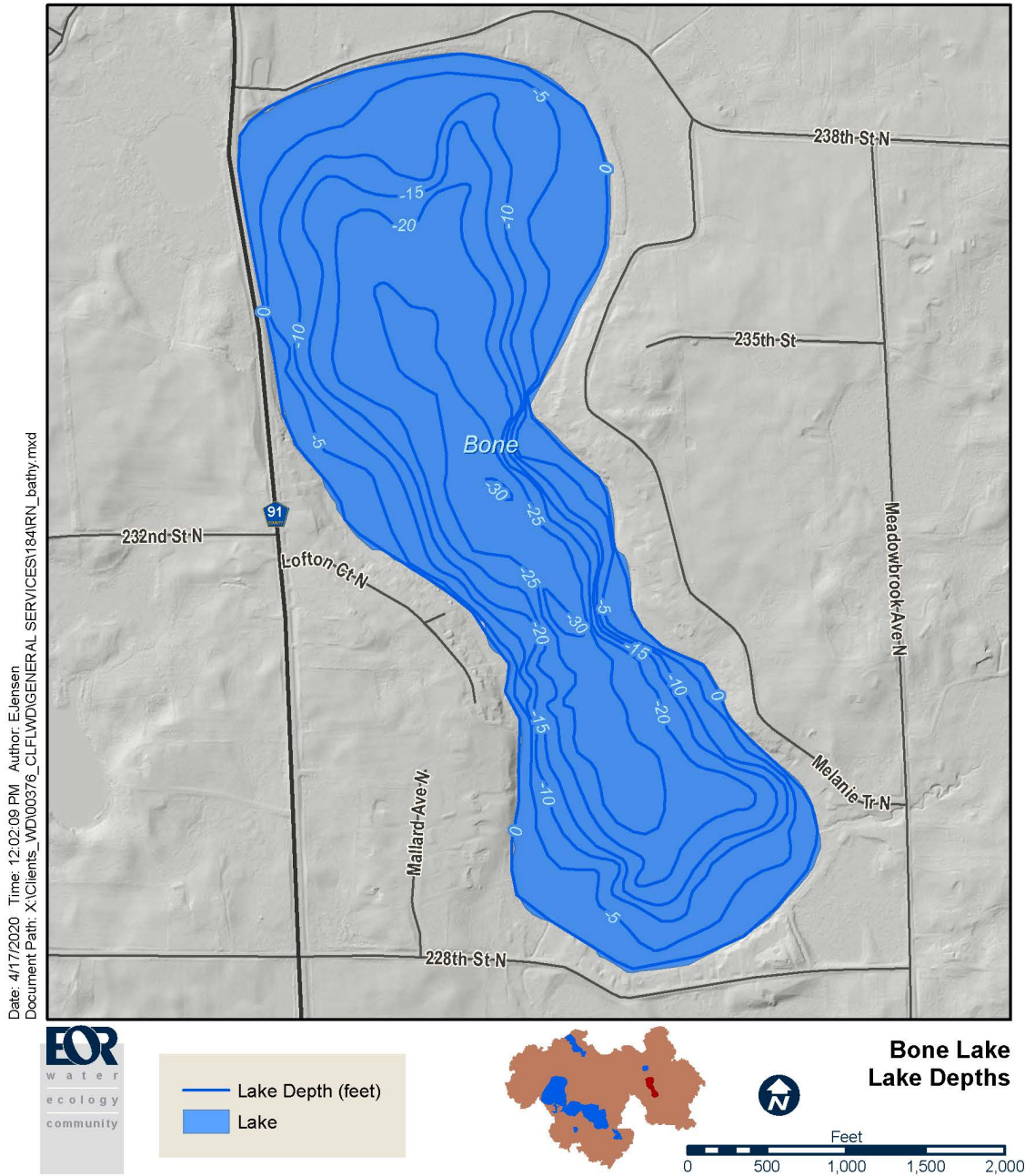
County: Washington

Surface Area: 221 acres

Littoral Area (depths less than 15 feet): 124 acres

Maximum Depth: 30 feet

Shore Length: 3.01 miles



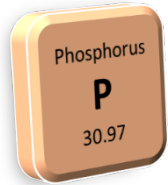
BONE LAKE

2020 Surface Water Quality Summary

Nutrients:

June-Sept. Average Total Phosphorus (TP, $\mu\text{g/L}$)

26 $\mu\text{g/L}$



Algae:

June-Sept. Average Chlorophyll-a (Chl-a, $\mu\text{g/L}$)

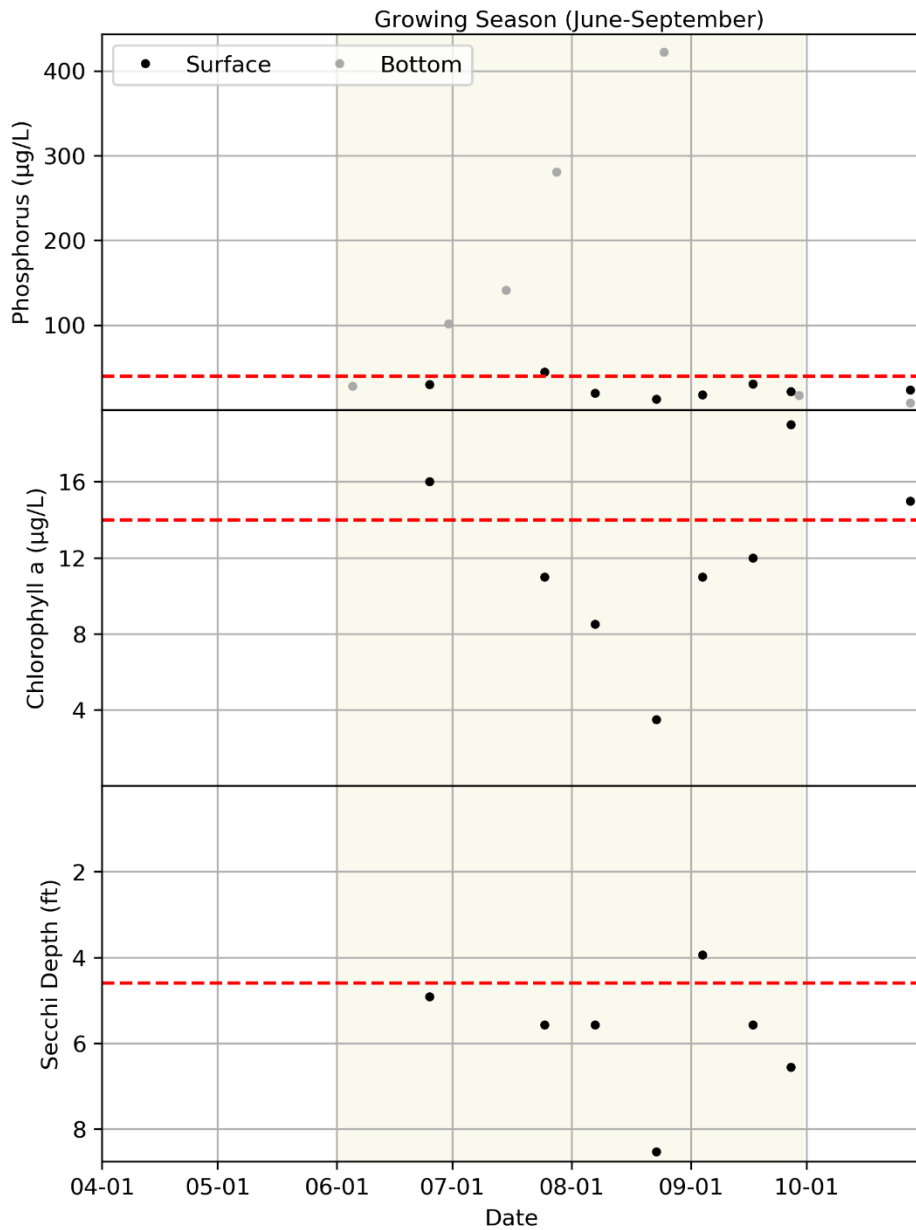
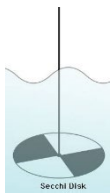
12 $\mu\text{g/L}$



Clarity:

June-Sept. Average Secchi Depth (Secchi, ft)

5.8 feet



State standard are shown with a dashed red line. Phosphorus = 40 $\mu\text{g/L}$, Chlorophyll-a = 14 $\mu\text{g/L}$, Secchi Depth = 4.6 feet. Sample points are shown in black dots. Points above the line are worse than the State standard. Points below the line are better than the State standard.

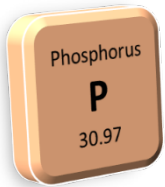
BONE LAKE

Historical Water Quality Summary

	Phosphorus ($\mu\text{g/L}$)	Chl-a ($\mu\text{g/L}$)	Secchi (feet)
State Standard	< 40	< 14	> 4.6 feet
10-year Average (2011-2020)	36	17	4.4
2040 District Goal	< 30	n/a	> 7.0
5-year Average (2016-2020)	30	17	5.1

Nutrients:

June-Sept. Average
Total Phosphorus
(TP, $\mu\text{g/L}$)



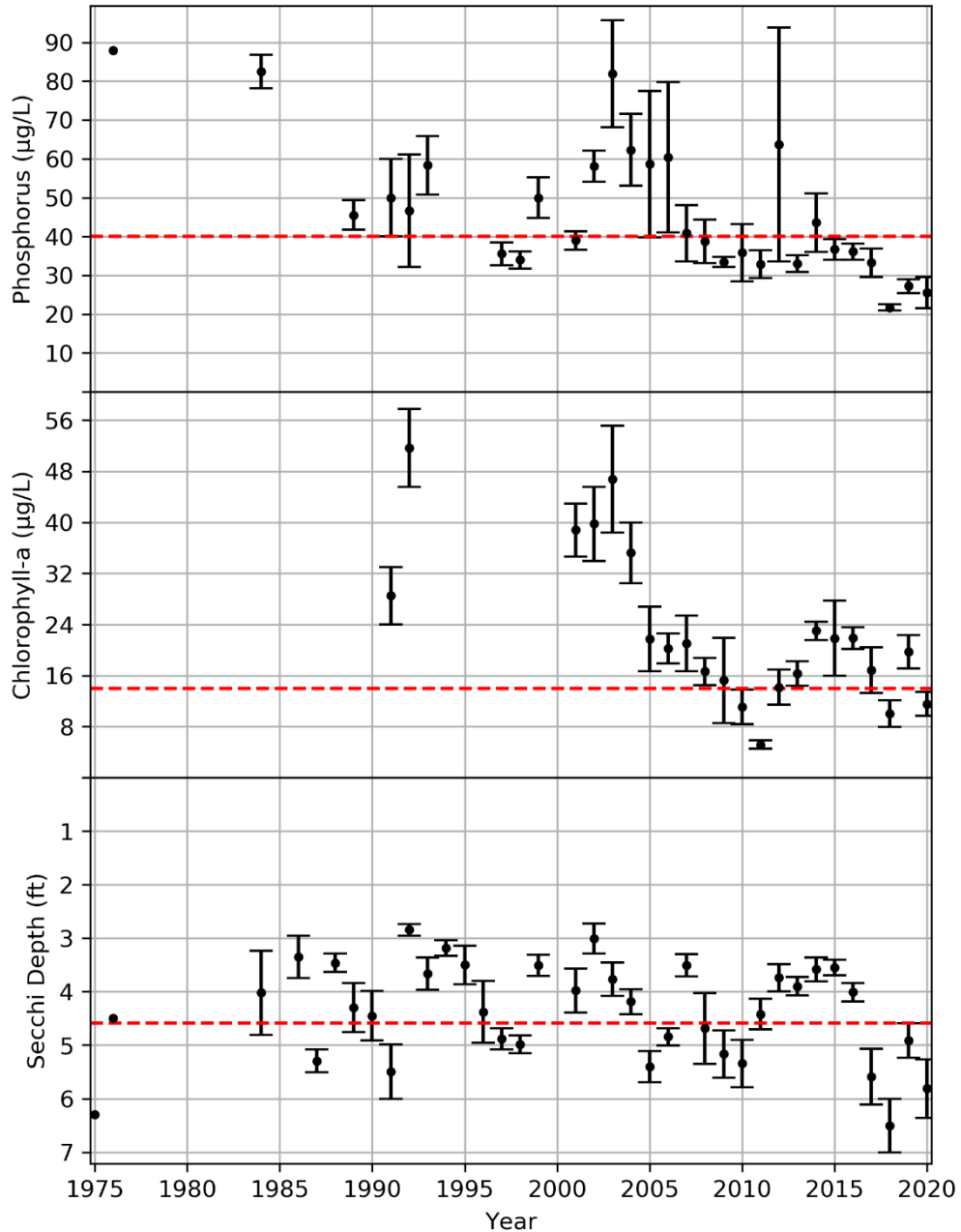
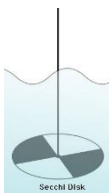
Algae:

June-Sept. Average
Chlorophyll-a
(Chl-a, $\mu\text{g/L}$)



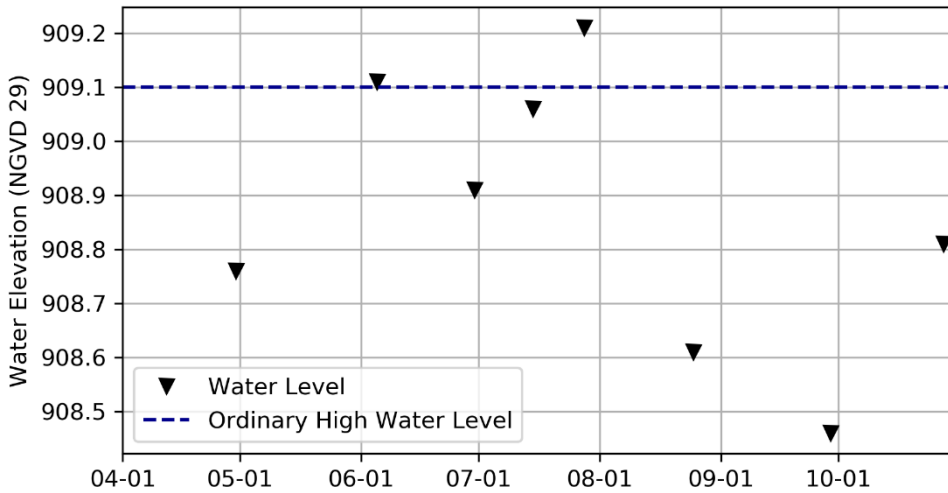
Clarity:

June-Sept. Average
Secchi Depth
(Secchi, ft)



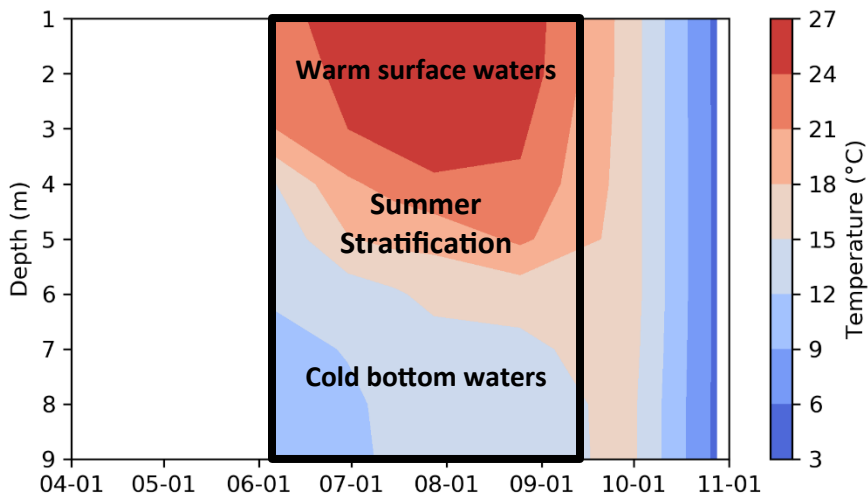
State standard are shown with a dashed red line: Phosphorus = 40 $\mu\text{g/L}$, Chlorophyll-a = 14 $\mu\text{g/L}$, Secchi Depth = 4.6 feet. Growing season averages are shown as black points. Points above the line are worse than the State standard. Points below the line are better than the State standard.

BONE LAKE



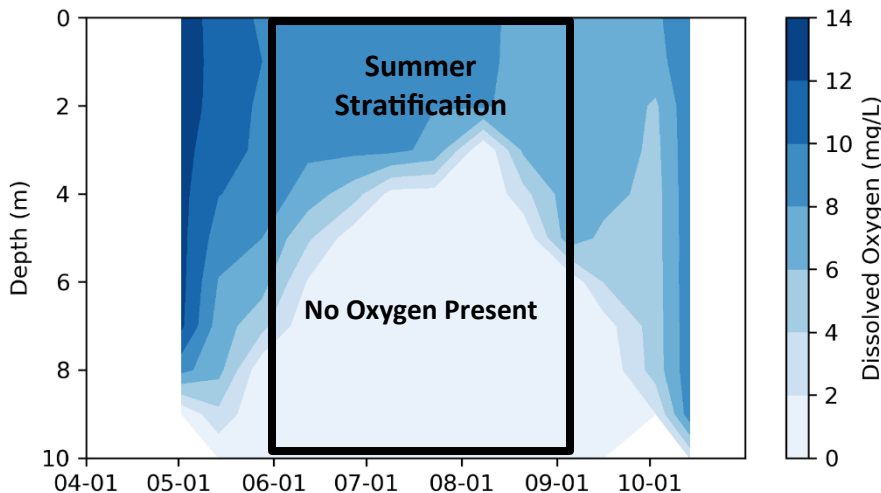
2020 Lake Levels

Lake levels ranged over a total of 0.75 feet; between a minimum of 908.46 feet on September 29, 2020 and a maximum of 909.21 feet on July 28, 2020.



2020 Temperature Profiles

The lake was stratified from early June until early September.



2020 Dissolved Oxygen Profiles

Grey represents the duration and depths where no oxygen is present and sediment phosphorus can be released and contribute to internal loading.

Internal loading was possible from early June until early September, and bottom P concentrations increased to moderate levels by August.