



# July Budget Workshop

*July 13, 2023 Regular Board Meeting*





# Greenway Approach – Notes from President Schmaltz

---

## Overview of Priorities:

1. The major driving force behind our Greenway effort is water quality improvement and sustainability driven by a focus on both wetland restoration/protection, buffers, and floodplain attenuation through water storage. This direction is a natural progression of our previous focus on water quality restoration of our lakes.
2. CONSERVATION: While desirable, it is a secondary priority unless our Natural Resource Inventory project identifies selected conservation “gems” that the Board decides to protect.
3. RECREATION: Use of any of the acquired or restored land, while of potential value to the community, is the leadership responsibility of our partners such as the city/county/township. Our responsibility is to keep these partners fully apprised of our priorities, plans, and consummated land acquisitions.



# Greenway Approach – Notes from President Schmaltz

---

## Action Steps:

1. Conduct a Floodplain Vulnerability Study to identify high risk land parcels/resources. This will provide priority areas for wetland restorations as well as possible land acquisition. A grant request is pending, so hopefully this work can proceed later this year. [Grant request was unsuccessful this year, but hoping to apply again next year]
2. Accelerate City/WD collaboration on implementation of a Volume Control Facility.
3. Protect and restore priority wetlands and initiate more aggressive use of protective buffers per statute requirements.
4. Complete a Natural Resource Inventory for the WD. This will provide the data to set wetland and perhaps conservation priorities. Results will be available Dec 2022.
5. All of the above activities will be driving the required parcel and land acquisition.



# Proposed Greenway Strategy

“Greenway Corridor” isn’t a new layer on top of our existing work. Rather, it is the amalgamated result of our ongoing work.

## Two-pronged approach:

1. (Shoreland) Implement strong outreach program and shoreline restoration program to create green space and improve habitat and ecosystem services immediately surrounding the lakes...
2. (Watershed) ...while also pursuing partnerships and opportunities to protect and/or enhance pieces of land further up in each lake’s watershed.

### • Shoreland

- **Target the shorelines with the greatest need.** Shoreline team established methodology and is currently working on surveying.
- **Perform targeted outreach to private landowners, while also working with public partners.** We are actively widening our outreach net and being thoughtful w/ E&O Plan to promote a shoreline stewardship mindset. Utilize surveys to target outreach to landowners and partner with lake associations for outreach. At the same time, we have actively strengthened interagency partnerships and have multiple partner projects in the works (e.g., city parks and dead end streets).
- **Multiple grant programs align with this work, and we have multiple grants in the works.**

### • Watershed

- **Prioritize sites for flood retention and resiliency.** With the flood hazard mapping, we have an idea where these are, but the full vulnerability assessment will help us narrow in even more. Goal to add 99 ac-ft of storage, but need to target where these ac-ft will be most beneficial to the people/infrastructure/natural resources. Recognize that we can build resiliency in more ways than just adding flood storage.
- **Prioritize sites that achieve multiple benefits, including office space:** Top projects will have multiple benefits like wetland acres restored, native vegetation/habitat restored or improved, groundwater recharge areas protected. Understand that lake water quality benefits from all of this, but isn’t necessarily our guiding light here, like it was for the diagnostic studies. The data we’ve collected to date (which will be presented on the following slides) will be overlapped and cross-referenced to evaluate opportunities and guide discussions w/ partners. Office space suitability is another layer to consider in acquisition opportunities.
- **Utilize partnerships wherever possible.** Makes implementation much more feasible and aligns our work with shared partner priorities. Pursue private land acquisitions/easements as opportunities arise (new cost-share program has an easement component). Emphasizing partnerships doesn’t mean we won’t still be leading this work.
- **Work with partners to leverage funding and apply for grants.** CLFLWD will be the lead with this work, but we’ll still want to focus on shared objectives and multiple benefits. “If you want to go fast, go alone. If you want to go far, go together.”

***The District has laid the groundwork for this and is primed to proceed.***



# Proposed Greenway Strategy

“Greenway Corridor” isn’t a new layer on top of our existing work. Rather, it is the amalgamated result of our ongoing work.

## Two-Pronged Approach

### Shoreland

Implement strong outreach program and shoreline restoration program to create green space and improve habitat and ecosystem services immediately surrounding the lakes...

### Watershed

...while also pursuing partnerships and opportunities to protect and/or enhance pieces of land further up in each lake’s watershed.

***The District has laid the groundwork for this and is primed to proceed.***



# Proposed Greenway Strategy

“Greenway Corridor” isn’t a new layer on top of our existing work. Rather, it is the amalgamated result of our ongoing work.

---

## Two-Pronged Approach

### Shoreland

- **Target shorelines with the greatest need**
  - ✓ Shoreline team established methodology & is currently working on surveying
- **Perform targeted outreach to private landowners while also working with public partners**
  - ✓ Actively widening our outreach net & being purposeful w/ E&O Pan to promote shoreline stewardship mindset
  - ✓ Utilize surveys to target outreach to landowners & partner w/ lake associations
  - ✓ Actively strengthening interagency partnerships & have multiple partner projects moving forward (city parks, dead end streets)
- **Multiple grant programs align with this work**
  - ✓ CLFLWD has multiple grants in process



# Proposed Greenway Strategy

“Greenway Corridor” isn’t a new layer on top of our existing work. Rather, it is the amalgamated result of our ongoing work.

---

## Two-Pronged Approach

### Watershed

- **Prioritize sites for flood retention and resiliency**
  - ✓ Flood hazard mapping has helped prioritization
  - ✓ Full vulnerability assessment will help us narrow in even more
  - ✓ Goal to add 99 ac-ft of storage, but need to target where these ac-ft will be most beneficial to the people/infrastructure/natural resources
  - ✓ Recognize that we can build resiliency in more ways than just adding flood storage
- **Prioritize sites that achieve multiple benefits (including office space)**
  - ✓ Top projects will have multiple benefits like wetland acres restored, native vegetation/habitat restored or improved, groundwater recharge areas protected
  - ✓ Lake water quality will benefit from all of this but isn’t our "guiding light" (like it was for the diagnostic studies)
  - ✓ Data we’ve collected to date will be overlapped and cross-referenced to evaluate opportunities and guide discussions w/ partners. Office space suitability is another layer to consider in acquisition opportunities.



# Proposed Greenway Strategy

“Greenway Corridor” isn’t a new layer on top of our existing work. Rather, it is the amalgamated result of our ongoing work.

---

## Two-Pronged Approach

### Watershed - *continued*

- **Utilize partnerships whenever possible**
  - ✓ Makes implementation much more feasible
  - ✓ Aligns with our work with shared partner priorities
  - ✓ Pursue private land acquisition / easements as opportunities arise: new cost-share program has easement component
  - ✓ Emphasizing partnership doesn't mean we aren't leading this work
- **Work with partners to leverage funding & apply for grants**
  - ✓ CLFLWD will lead this work, but we’ll want to focus on shared objectives and multiple benefits
  - ✓ ***“If you want to go fast, go alone. If you want to go far, go together.”***





# Greenway-Related Budgets

Account Number	Budget Item	2024 Total Expense Budget
3-004	Non-Point Source Pollution Abatement	\$181,629
3-005	Education and Outreach	\$164,254
3-006	Interagency Communication	\$60,513
3-012	Land Acquisition (amend as needed w/ future grants)	\$18,314
3-013	Watershed Planning & Resiliency	\$55,564
5-100	Floodplain (Regional Treatment Facility)	\$34,943
<b>Total Programs Most Directly Associated w/ Greenway</b>		<b>\$515,217</b>
<b>Percentage of Total 2024 Draft Budget (\$3.25M)</b>		<b>16%</b>

\*Spending may be higher depending on availability of leveraged/grant funds



## Office Space

- Budget still uncertain, but revenues/financing will be sought out
- Working with ISG to do feasibility
- Gathering public input
- Building workgroup assessing short and long-term options
- Facility tours and board visioning session upcoming
- ISG Needs Assessment to be presented later this year
- Attempt to align with greenway planning

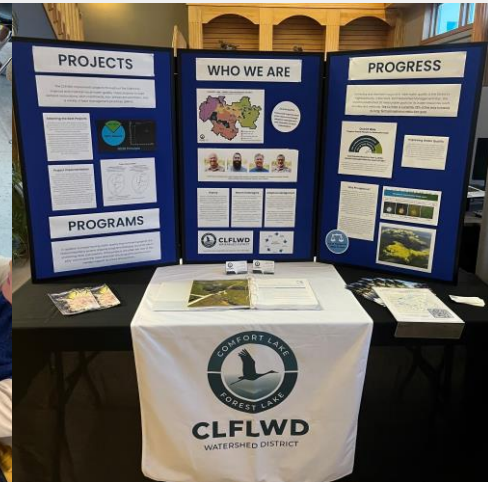




# Education & Outreach

## Budget

- 2024 Budget: \$164K (\$30K higher than 2022 YE)
  - EMWREP: \$20,481 (based on our Total Market Value)
  - Staff: \$83,144 (based on average cost of 1 FTE)
  - Events/Materials/Signage: \$60,629
- Spending increase is sufficient to accomplish goals/objectives from Comprehensive Education & Outreach Plan

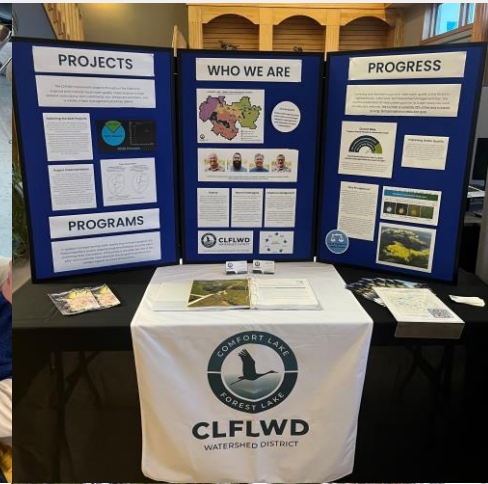




# Education & Outreach

## Activities

- 1 FTE in-house staff
- EMWREP, Blue Thumb, Watershed Partners, and Adopt-A-Drain participation
- Standard project signage and roadway signage
- Education kits and displays (e.g., roots display)
- State of the Watershed event
- [See E&O Comp Plan for full detail](#)





## Watershed Management Plan Goal Recap

- **Floodplain:** Add 99 ac-ft (but where?), community preparedness
- **Lakes:** Water quality, healthy fish/plants, chlorides, lakeshore buffers
- **Streams:** Water quality, chlorides, streambank buffers
- **Wetlands:** Protect/restore wetlands for: water quality, flood storage, habitat; wetland buffers
- **Upland:** Natural park space, greenway corridor
- **Groundwater:** Nitrate, complete GW-dependent natural resource inventory





## Watershed Management Plan Goal Recap

- **Floodplain:** Add 99 ac-ft (but where?), community preparedness
- **Lakes:** Water quality, healthy fish/plants, chlorides, lakeshore buffers
- **Streams:** Water quality, chlorides, streambank buffers
- **Wetlands:** Protect/restore wetlands for: water quality, flood storage, habitat; wetland buffers
- **Upland:** Natural park space, greenway corridor
- **Groundwater:** Nitrate, complete GW-dependent natural resource inventory





## Efforts to Date

- ✓ Wetland Bank Feasibility (\$30,000)
- ✓ H&H model update (\$230,000)
- ✓ Greenway visioning workshops and deliverables created (\$65,000)
- ✓ Natural Resource Inventory (\$107,000)
- ✓ Flood hazard mapping (\$8,000)

**Total invested to date: \$440,000**

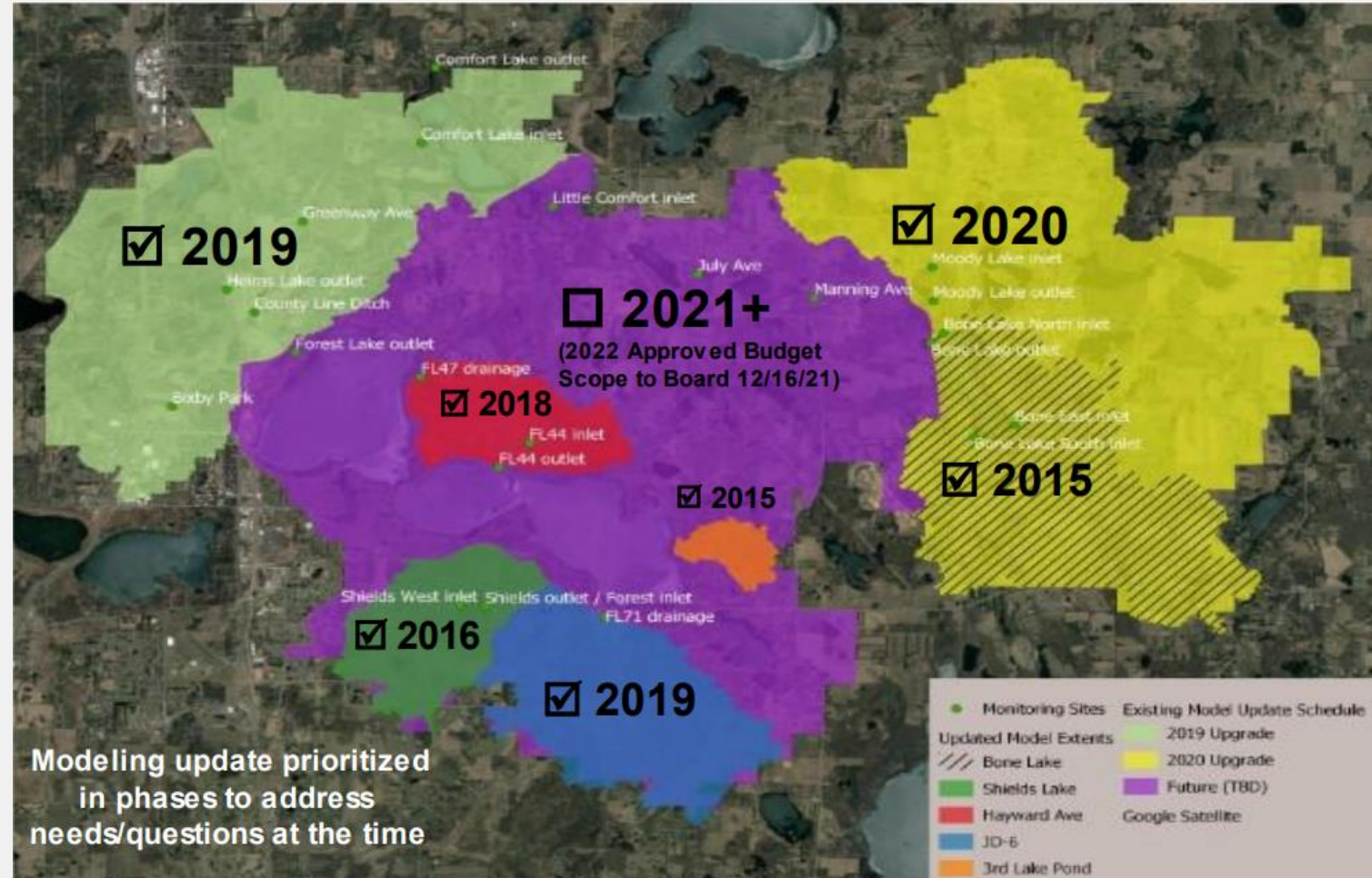
(Consultant assistance only; does not include staff or manager time)





# Hydrologic & Hydraulic (H&H) Model Update

- ✓ Invested in updating and calibrating the model itself
- ☐ Now we can use it to run scenarios

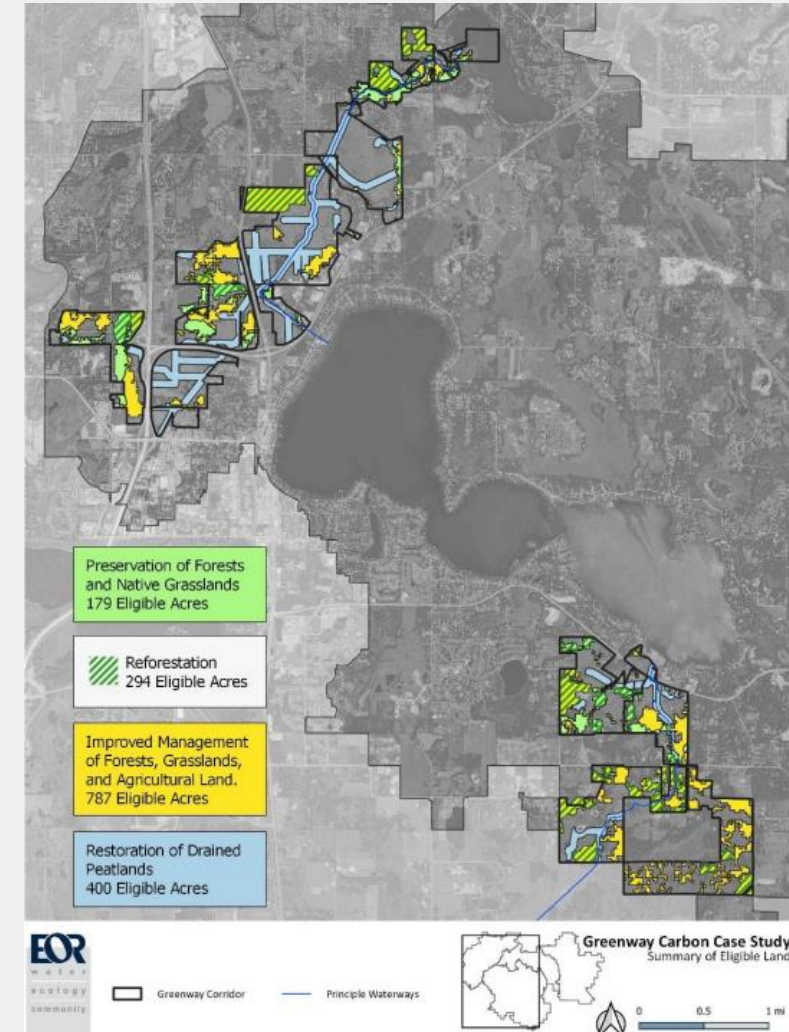
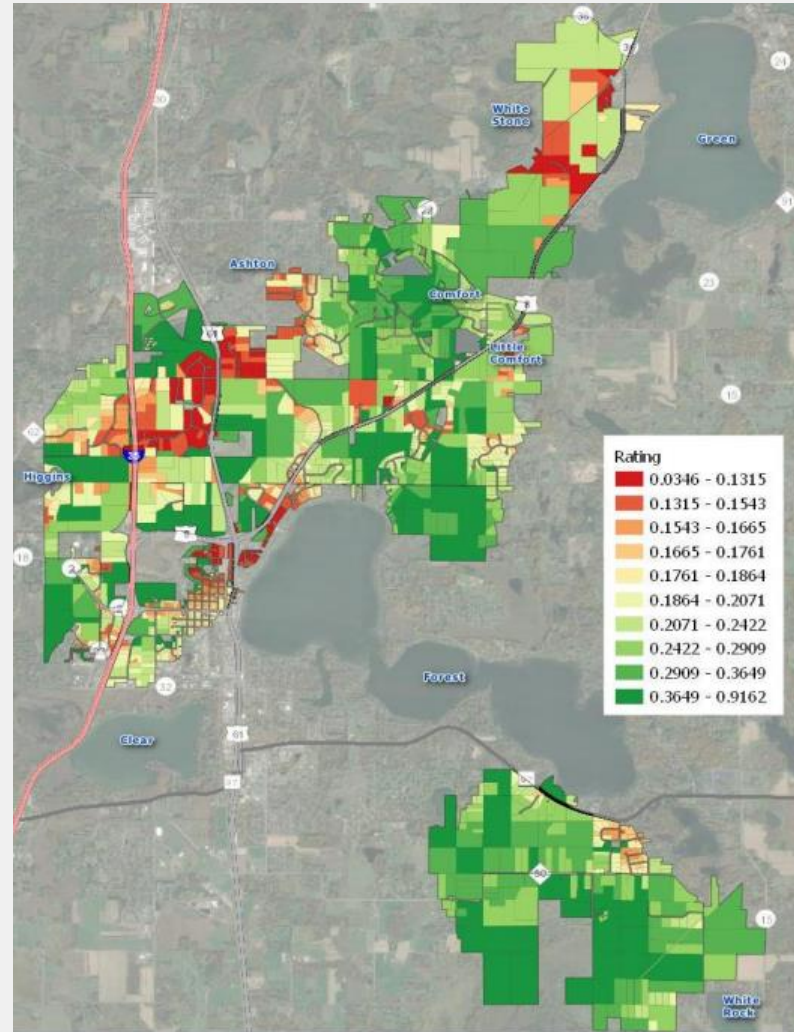






# Greenway Visioning

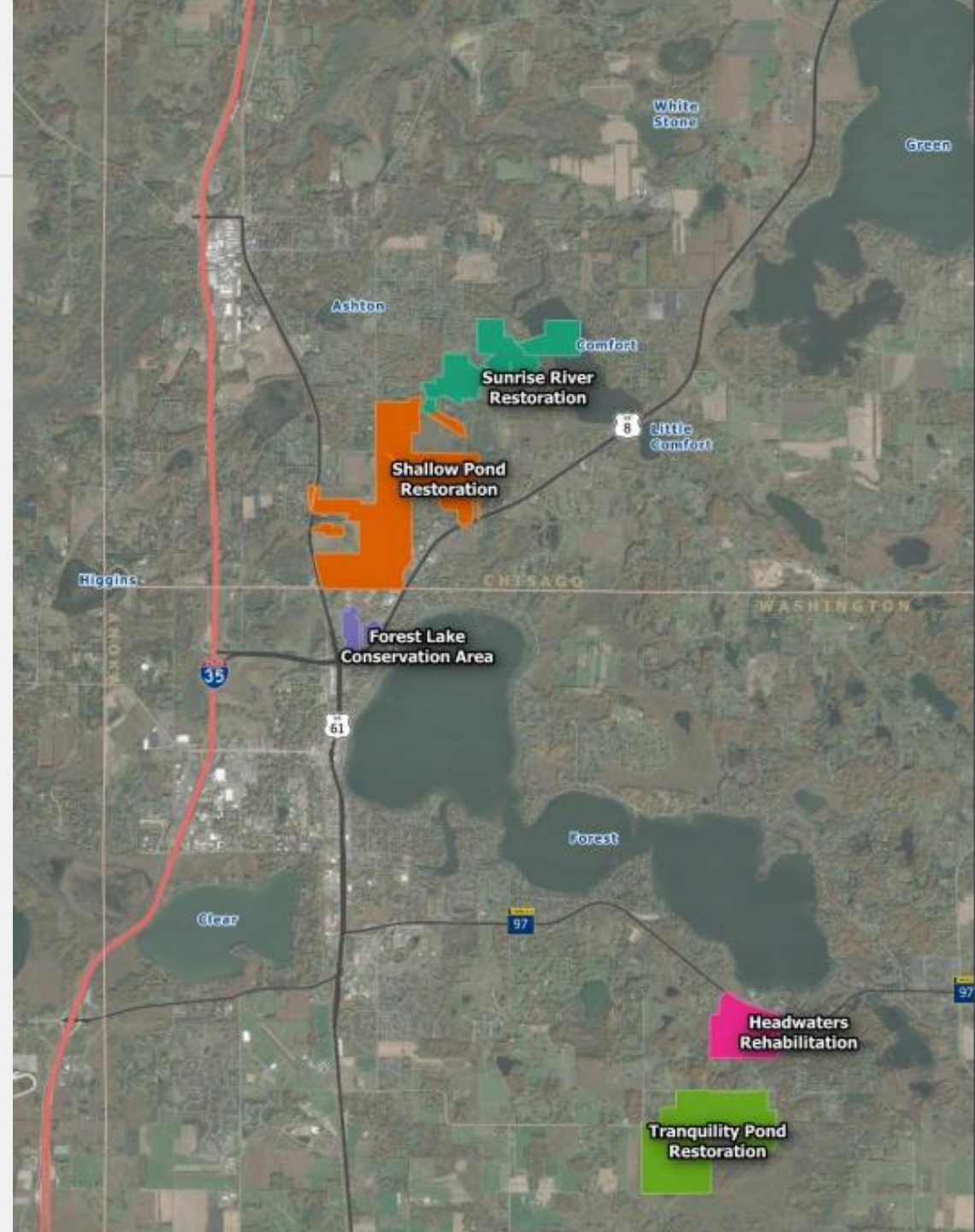
- ✓ Greenway Conservation Ranking
- ✓ Greenway Carbon Sequestration Potential





# Greenway Visioning

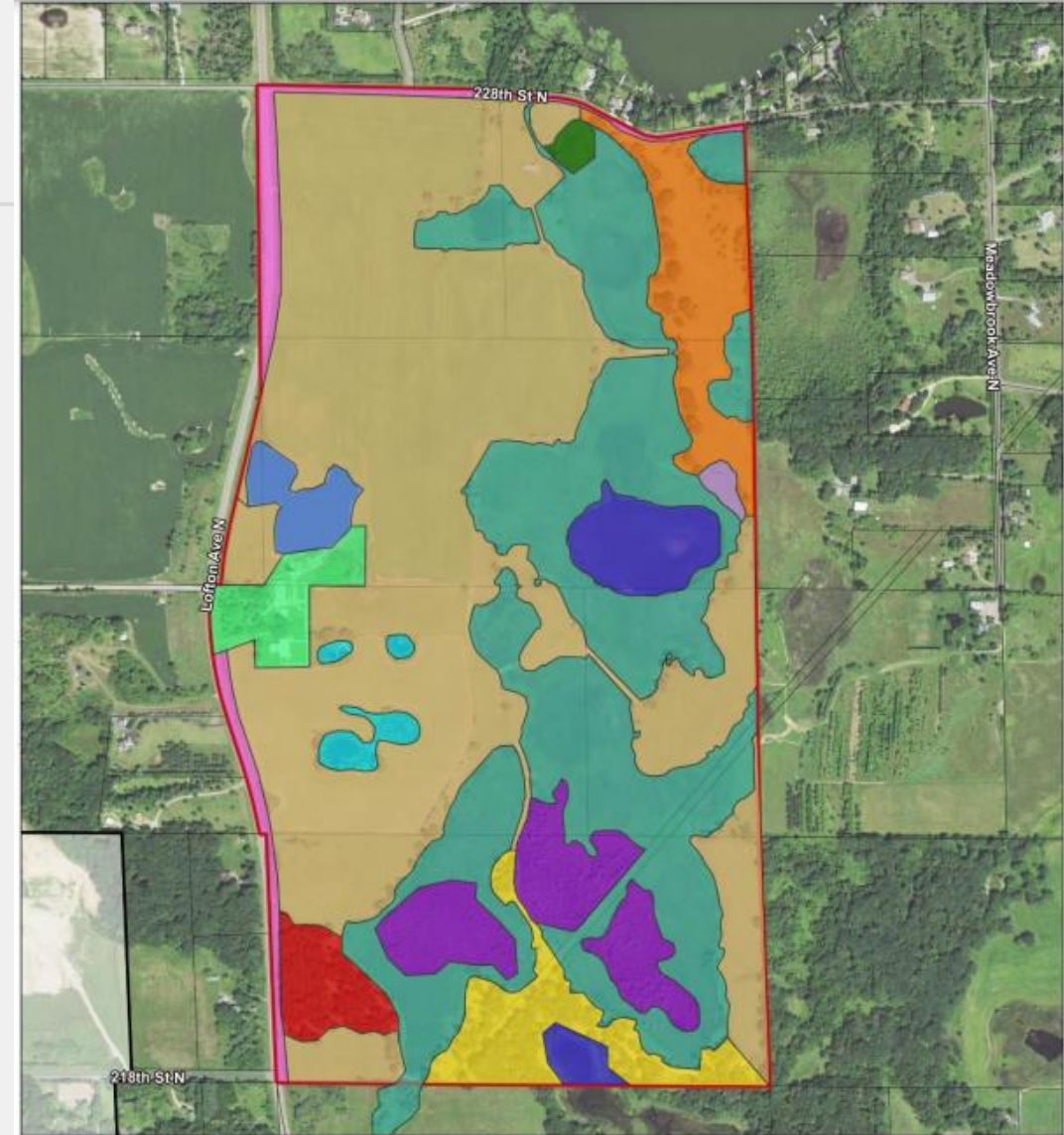
- ✓ Conceptual capital improvement projects within target greenway areas, but currently not a comprehensive, District-wide list
  - Feasibility of each project varies
  - Significant landowner outreach is necessary
  - Costs are high
  - Water quality benefits are much smaller
  - “Projects” may not always be the answer moving forward... utilize our programs and partnerships





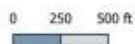
# Natural Resource Inventory

- ✓ Bone Lake South Wetland Natural Resources Inventory (case study site)



- Two-track Trails
- Existing Units
- 1: Cattail Marsh
- 2: Open Water
- 3: Northern Rich Fen
- 4: Tamarack Swamp
- 5: Sedge Meadow
- 6: Small Marshes
- 7: Agricultural/Hayfield
- 8: Farm Pond
- 9: Mesic Forest
- 10: Open Forest
- 11: House/Farm
- 12: Roadside/Ditches
- 13: Old Road Bed/Tree Line

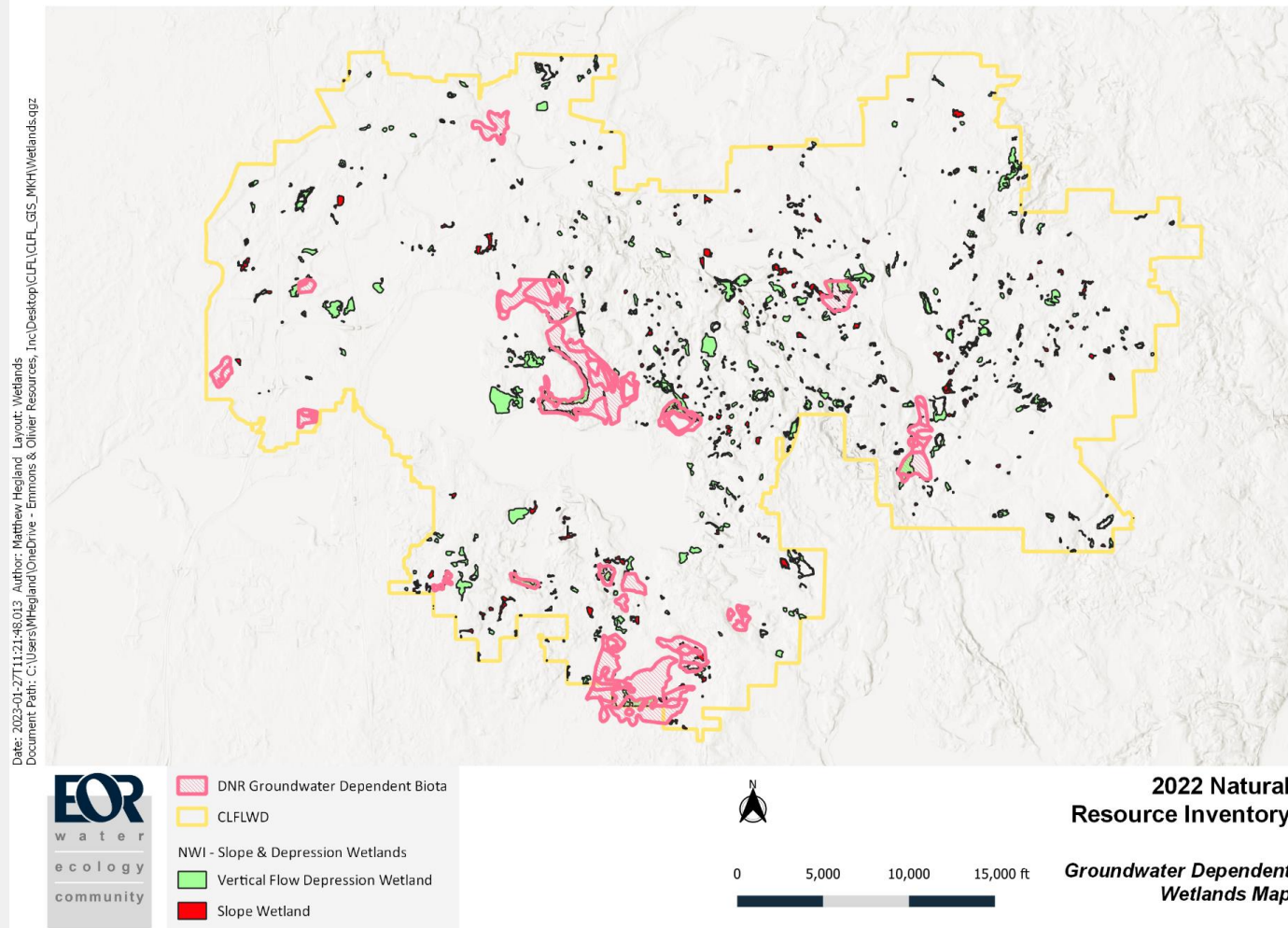
**Natural Resource Inventory 2022**  
WR1 Complex & Surrounding Property Existing Units





# Natural Resource Inventory

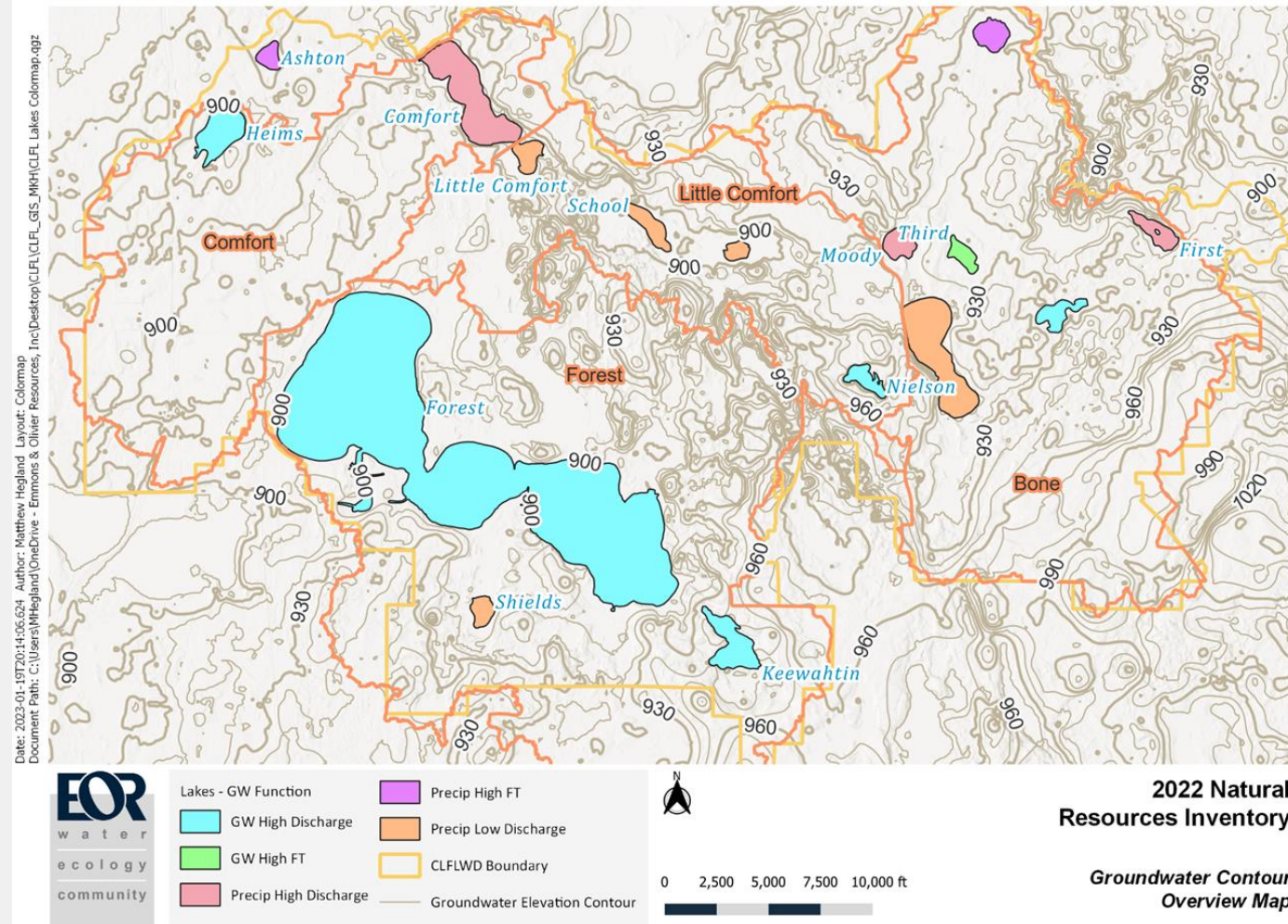
- ✓ Groundwater Dependent Natural Resources Inventory Technical Memo and Maps





# Natural Resource Inventory

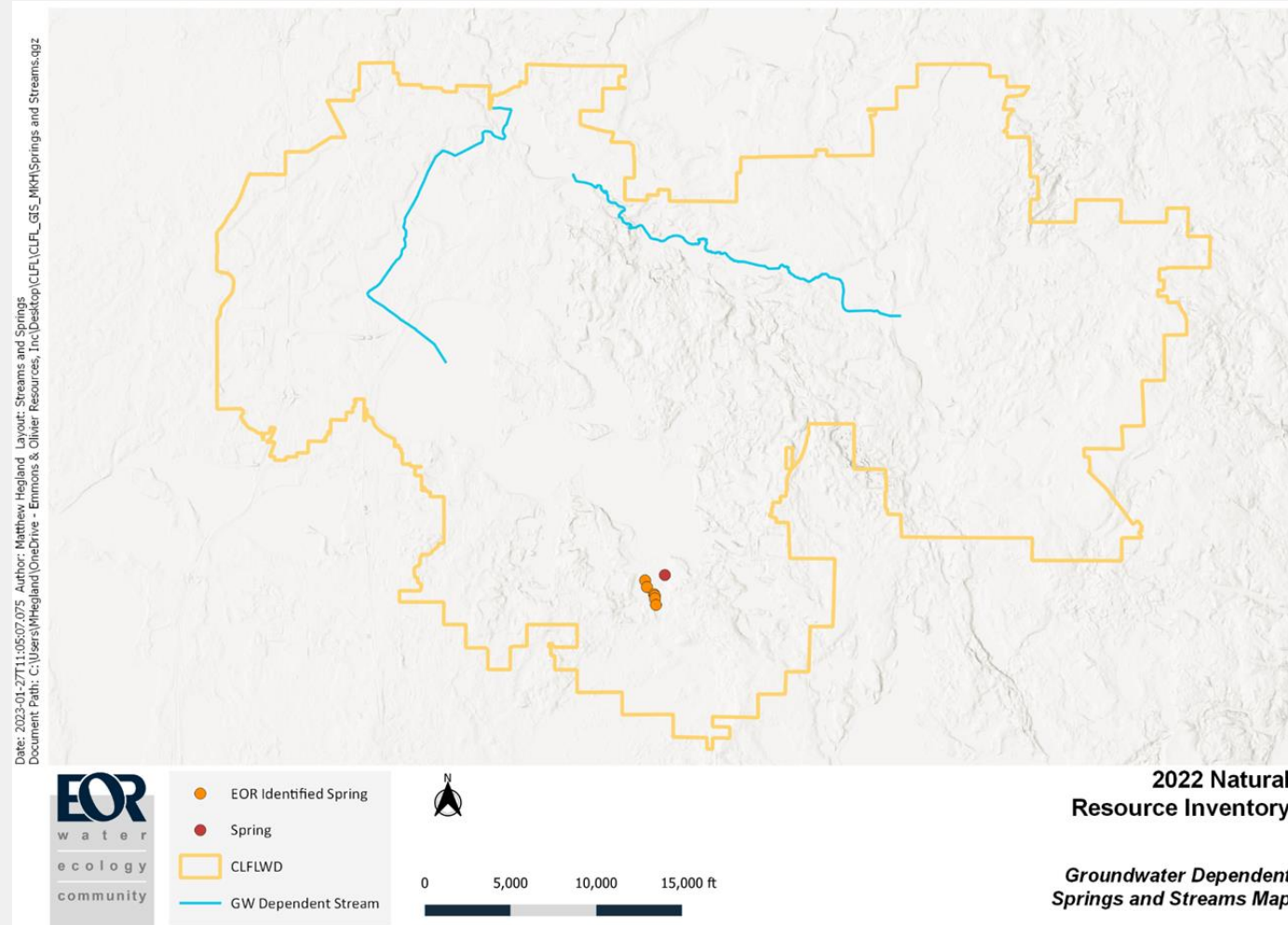
- ✓ Groundwater Dependent Natural Resources Inventory Technical Memo and Maps





# Natural Resource Inventory

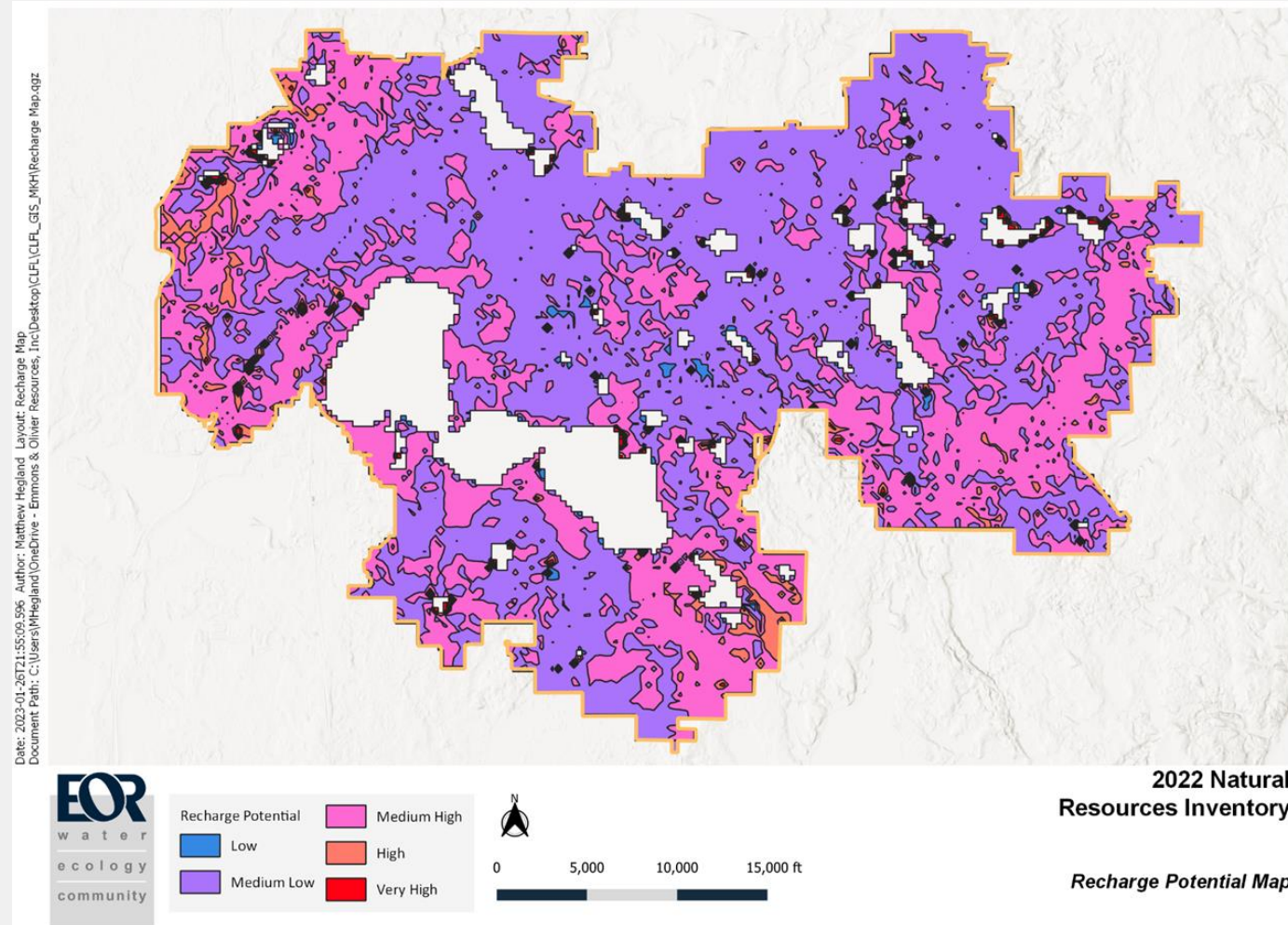
- ✓ Groundwater Dependent Natural Resources Inventory Technical Memo and Maps





# Natural Resource Inventory

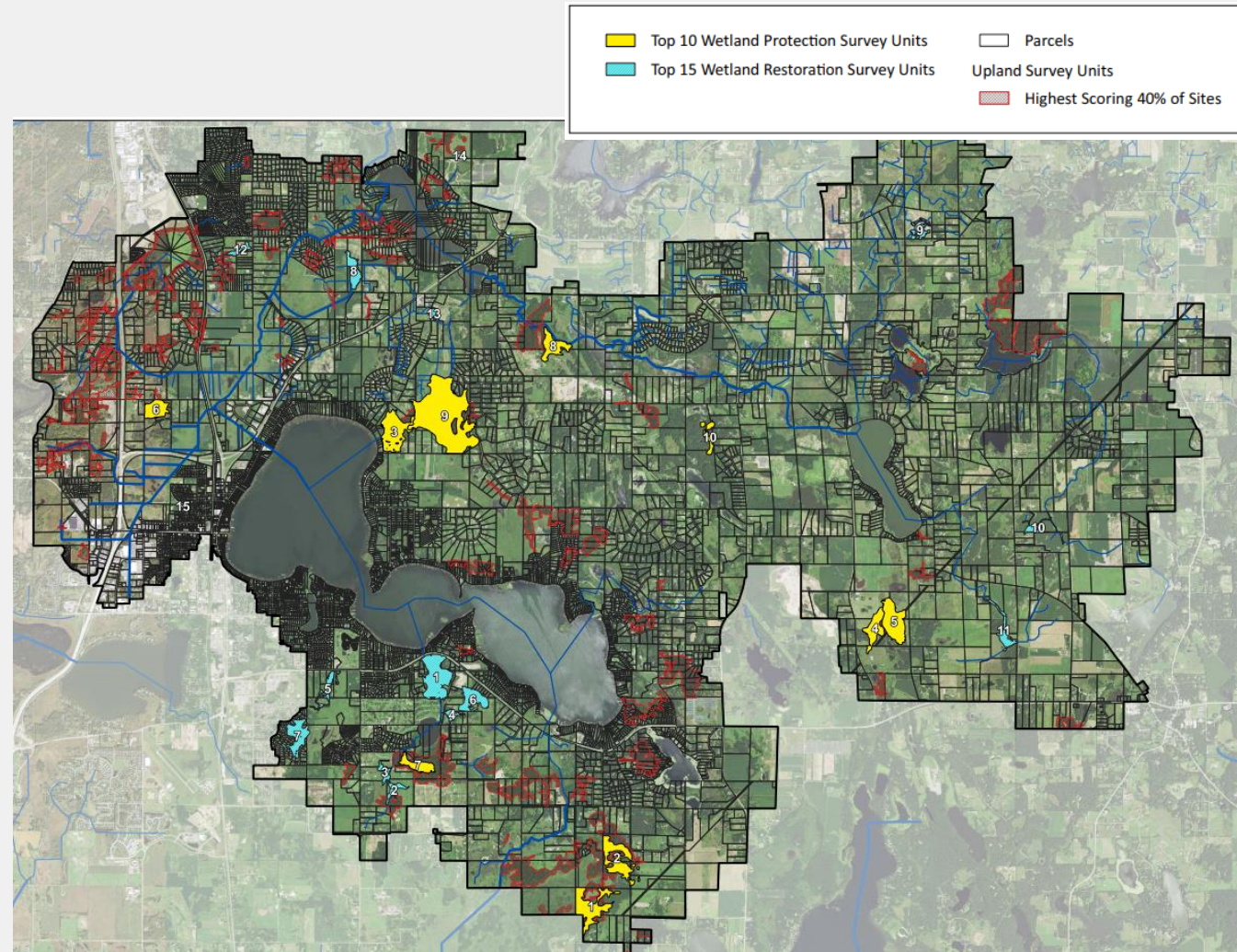
- ✓ Groundwater Dependent Natural Resources Inventory Technical Memo and Maps





# Natural Resources Inventory

- ✓ Top 25 wetlands per WMP priority areas, greenway conservation ranking, MN biological survey
  - Top 10 for protection
  - Top 15 for restoration
- Note these are the \*next\* top 25 after we've already restored several wetlands for water quality benefits (e.g., Bixby Park, Highway 61, Bone Lake NE/SE, Moody Lake Wetland Rehab)

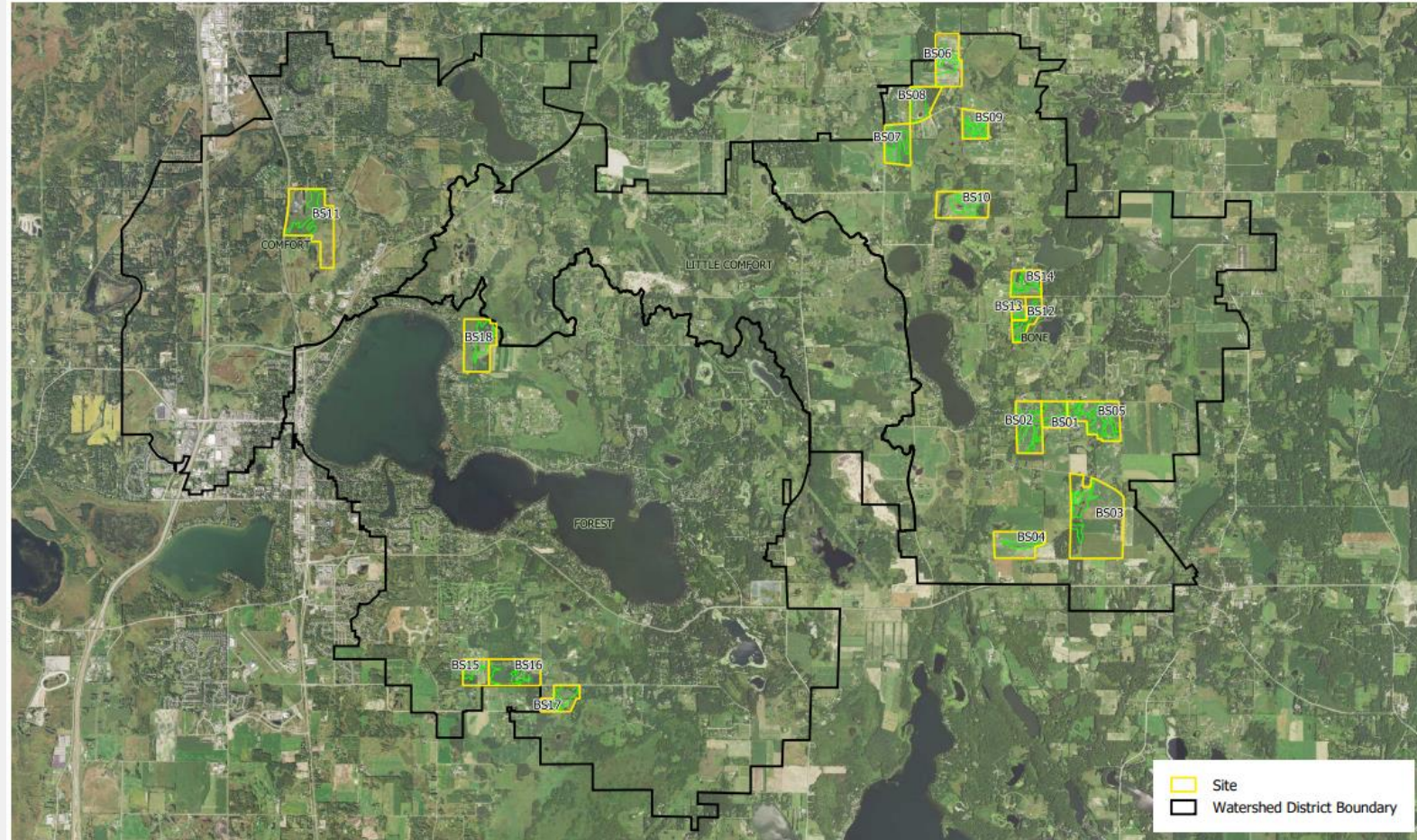






# Wetland Bank Feasibility

- ✓ Wetland bank feasibility completed in 2019
- Landowner outreach occurred, but no landowners on board yet



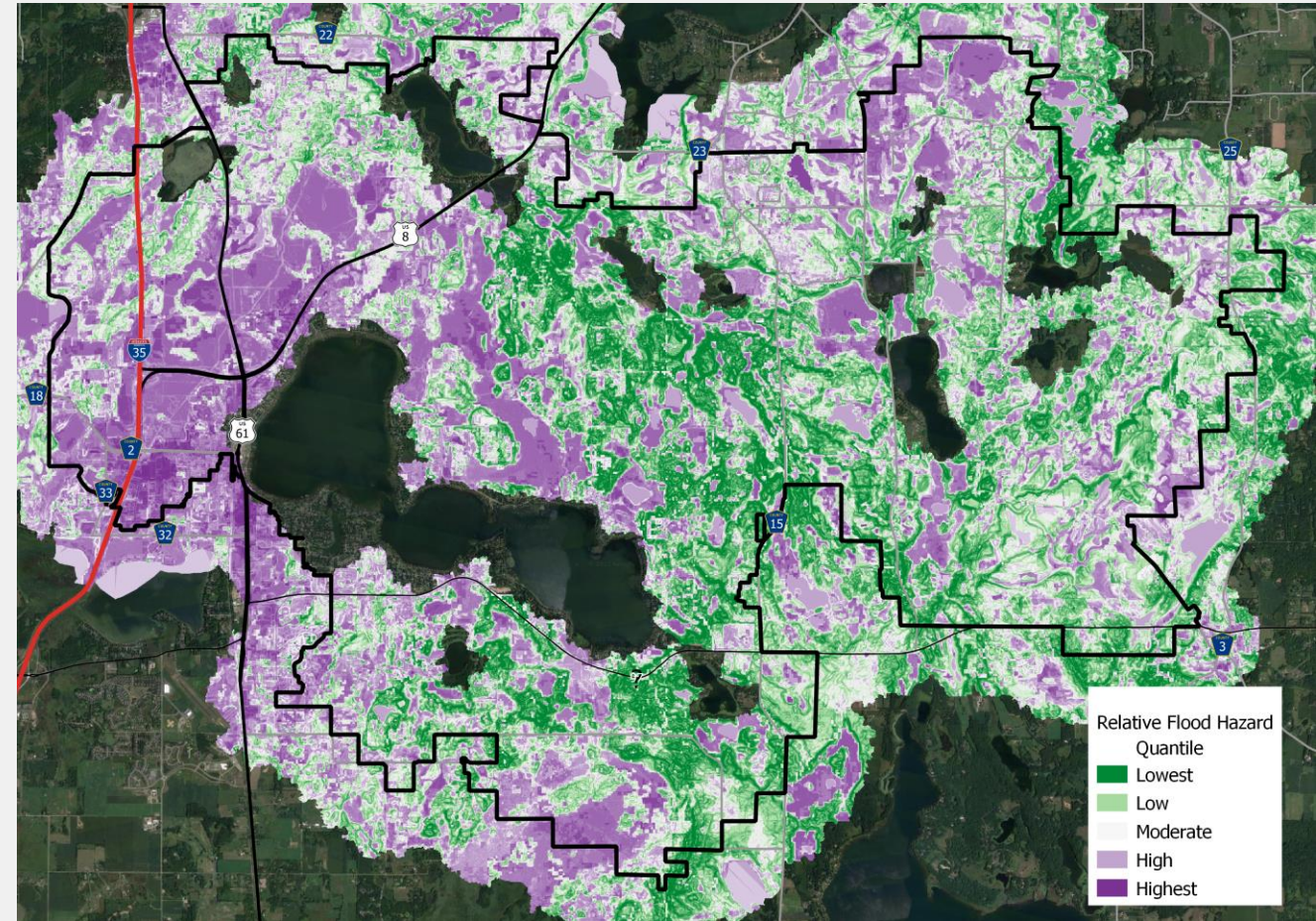
Mitigation Bank Feasibility Site Locations





# Flood Hazard Mapping

- ✓ Step 1: Flood *hazard* →
- ☐ Step 2: Flood *vulnerability*
  
- See supplemental attachment Q&A doc in July workshop board packet



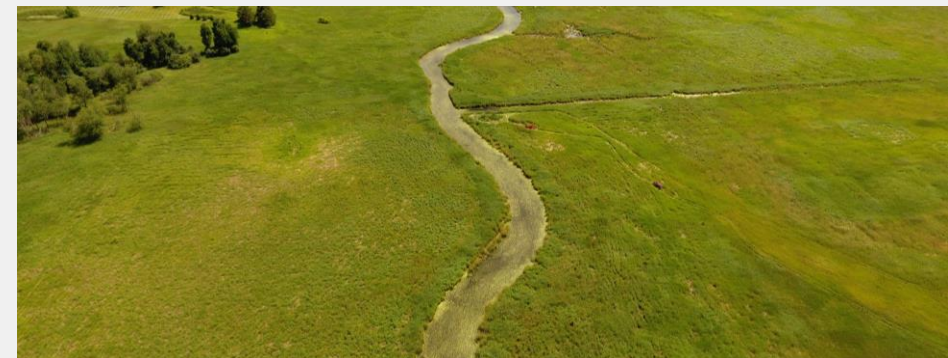
Flood Hazard Map



# Comfort & Little Comfort Lake Management Districts

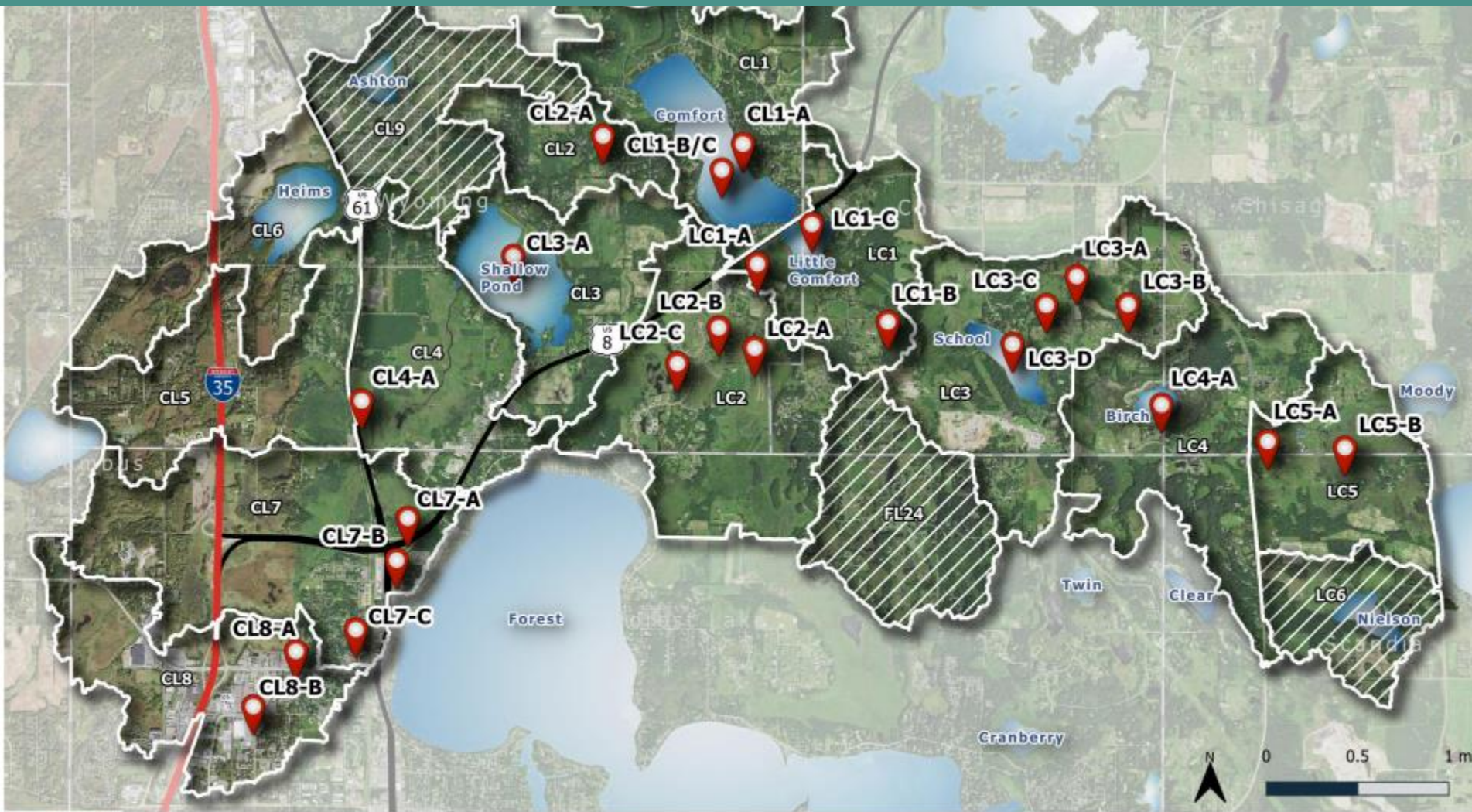
## Comfort and Little Comfort Lakes Diagnostic Study Projects

- Several projects identified
- Some carried forward from 2012 Water Quality & Flowage Study Engineer's Report



# Comfort Lake & Little Comfort Lake Diagnostic Study

Date: 2021-08-26T12:36:41.515 Author: Sarah Grandstrand Layout: RM\_BMP\_Locations  
 Document Path: X:\Clients\_WD\00376\_CLFLWD\0189\_Comfort\_Diag\_Update\09\_GIMS\GIS\RM\_WtrshdCharacteristics.qgz

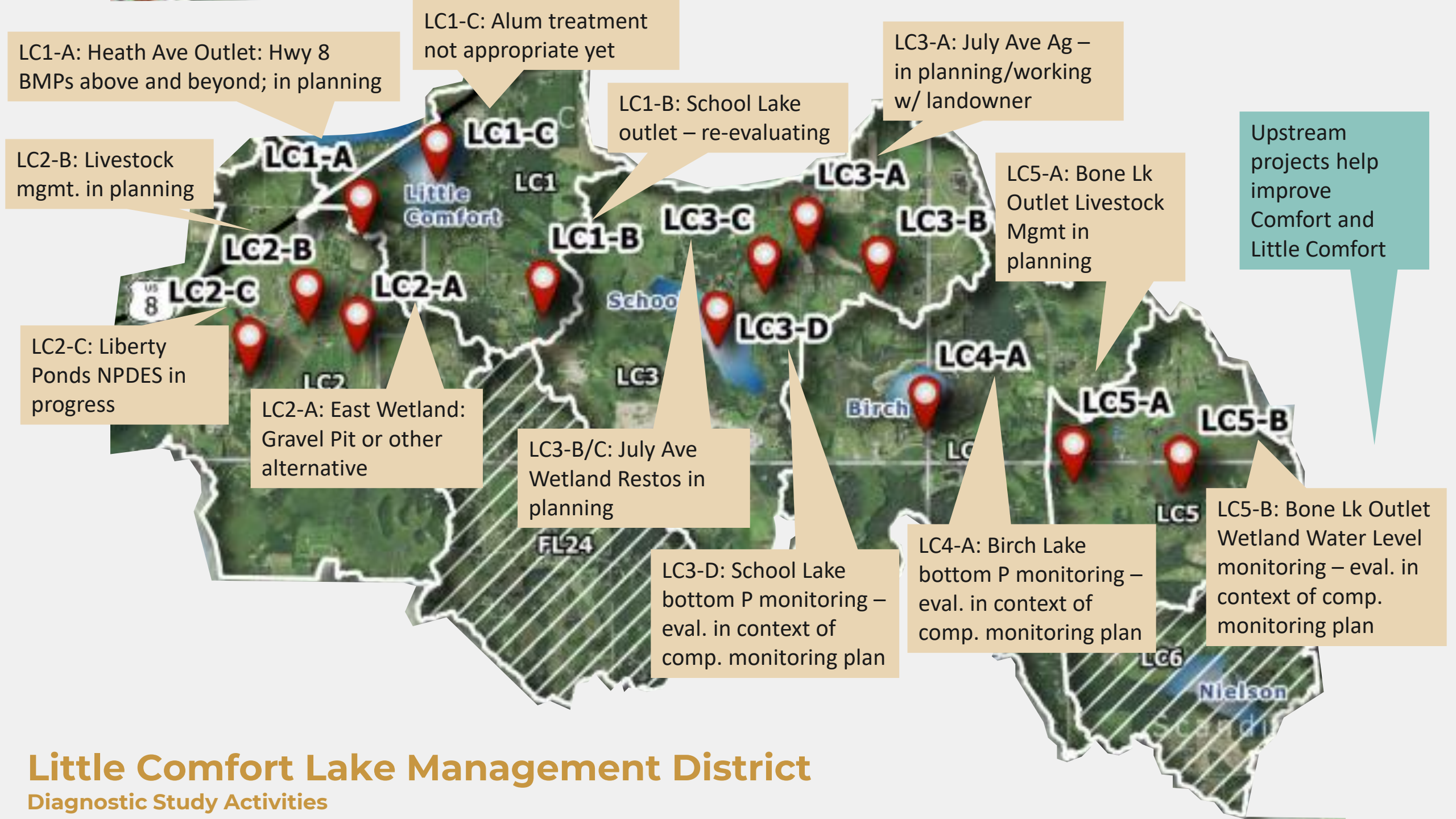


-  Subwatershed
-  Landlocked Subwatershed
-  BMP Locations



**Comfort and Little Comfort Lake Diagnostic Study**  
**BMP Locations**

**Figure 3-1. Little Comfort and Comfort Lake Management District Best Management Practice Locations**

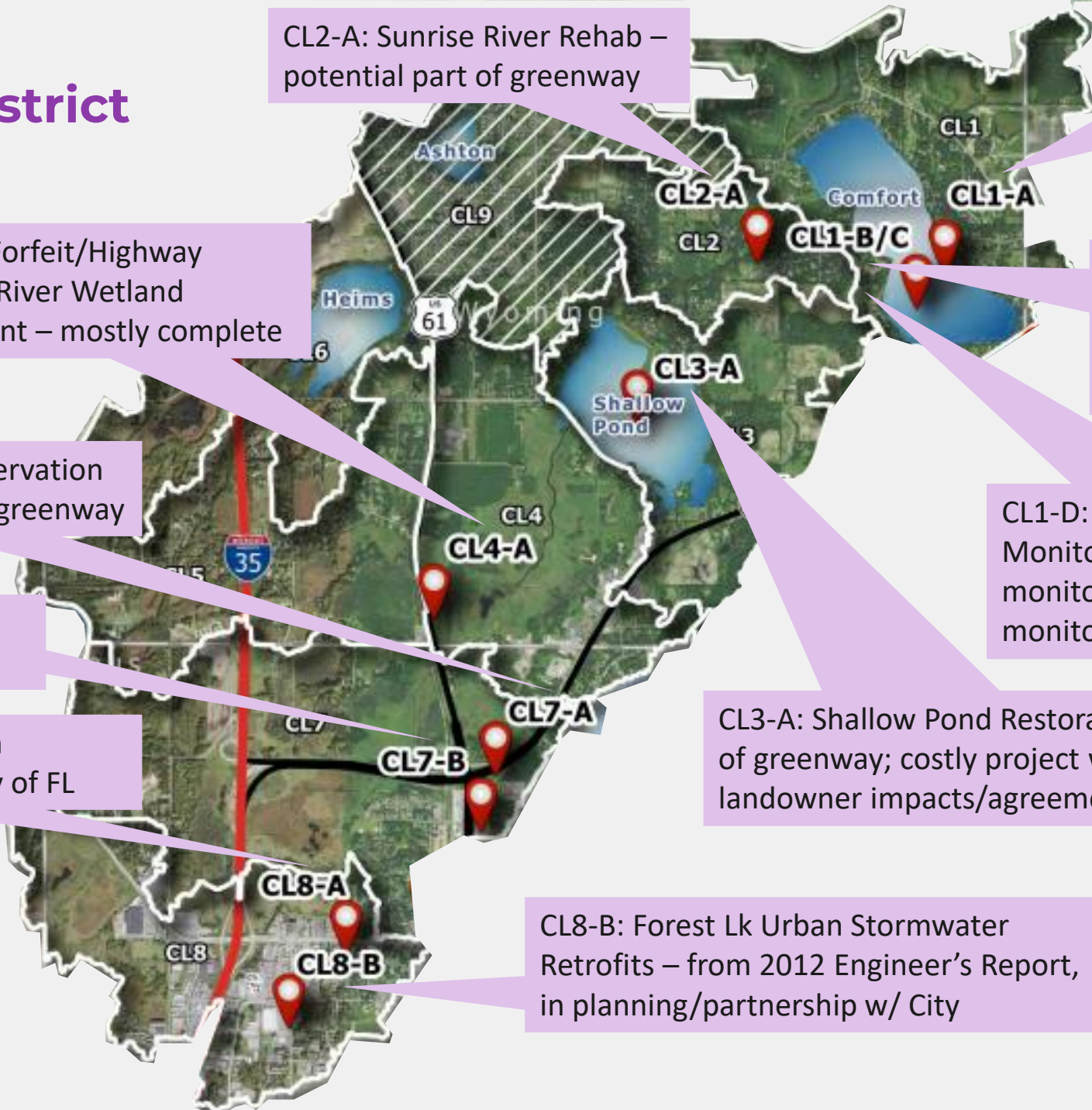


# Little Comfort Lake Management District

## Diagnostic Study Activities

# Comfort Lake Management District

## Diagnostic Study Activities



CL2-A: Sunrise River Rehab – potential part of greenway

CL1-A: Shoreline Restorations – in progress w/ revamped program

CL4-A: Tax Forfeit/Highway 61/Sunrise River Wetland Enhancement – mostly complete

CL1-B/C: Comfort Lk bottom P and flow tracer monitoring – in progress w/ ongoing monitoring program

CL7-A: Forest Lake Conservation Area – potential part of greenway

CL1-D: Direct Drainage Monitoring/Feasibility – diagnostic monitoring rotation part of comp. monitoring plan

CL7-B: Hwy 61 Regional Pond – partnership w/ City of FL

CL3-A: Shallow Pond Restoration – potential part of greenway; costly project w/ extensive landowner impacts/agreements

CL8-A: Broadway Ave IESF Basin Expansion – partnership w/ City of FL

CL8-B: Forest Lk Urban Stormwater Retrofits – from 2012 Engineer’s Report, in planning/partnership w/ City