



# Project Update

*November 16, 2023*

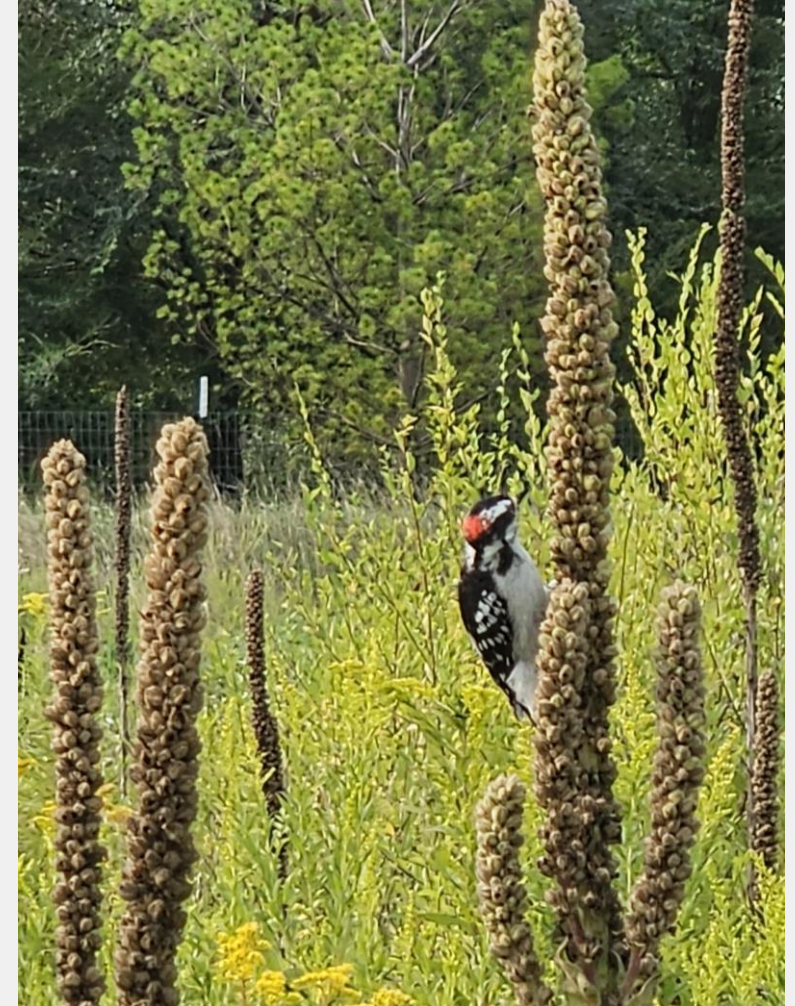
Blayne Eineichner, Project Coordinator





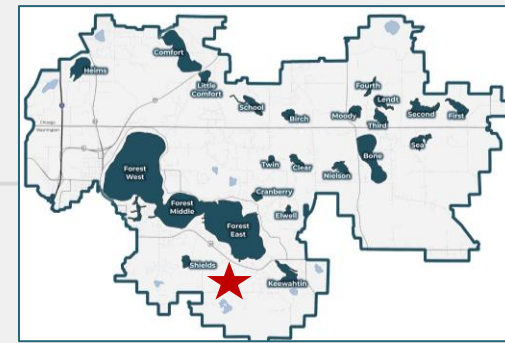
# Introduction

- These slides are intended as an informational update of progress on the many projects underway throughout the District.
- Similar information will also be presented in this month's Administrator's report.
- If there are any questions regarding this update, please reach out directly to the Administrator and/or staff in advance of the board meeting.





# WJD6 Western Tributary Wetland Enhancement



## **Project:**

Wetland enhancement / connectivity, hydrology restoration

## **Project Phase 4:**

Implementation

## **Benefit:**

~20 lbs/yr phosphorus reduction

~3,200 lbs/yr TSS reduction

## **Lifetime cost per pound phosphorus reduction:**

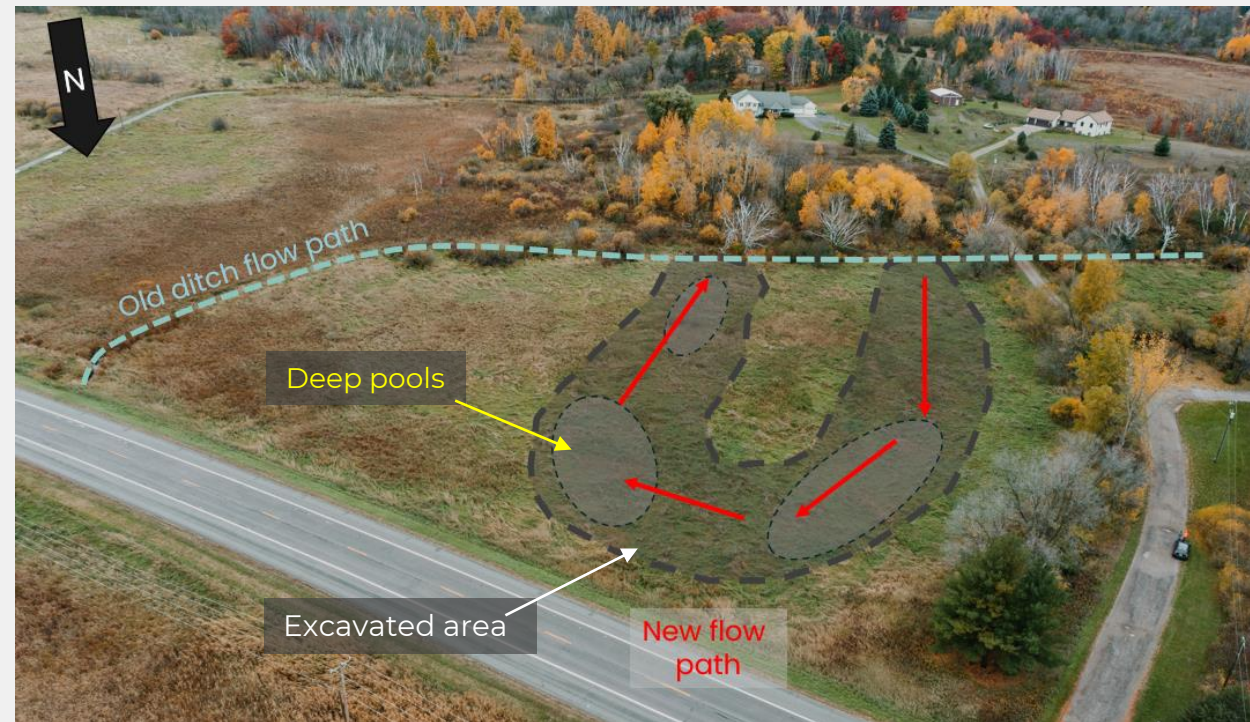
\$1,043

## **Status:**

Contracting complete.

Project Open House Nov. 8<sup>th</sup> at CLFLWD offices.

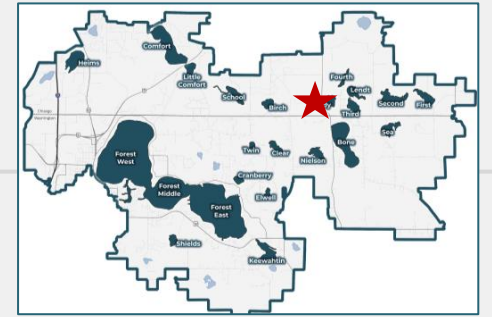
On track for winter implementation.



View of wetland from Drone with overlay of the project schematics.



# Moody Lake Capstone Projects



## **Project:**

several small wetland enhancements, legacy load removal, and agriculture best management practice (BMP)

**Project Phase 3:** Design

**Benefit:** 58lbs/yr phosphorus reduction

~9,000 lbs/yr TSS reduction with Ag BMP's

## **Lifetime cost per pound phosphorus reduction:**

\$400/lbs.TP/yr

## **Status:**

Contracting underway.

Project Open House Nov. 8<sup>th</sup> at CLFLWD offices.

On track for winter implementation.



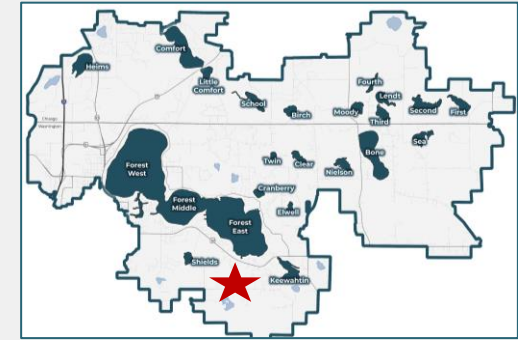
Legacy Load Removal Area



Moody Park and Round Barn Project Area



# County Road-50 Iron Enhanced Sand Filter (CR50 IESF)



## **Project:**

Iron Enhanced Sand Filter in the Washington Judicial Ditch 6 Subwatershed of Forest Lake

## **Project Phase 4:**

Implementation

## **Benefit:**

Est. 97 lbs/yr phosphorus load reduction

Est. 3,000 lbs/yr TSS reduction to Forest Lake

## **Lifetime cost per pound phosphorus reduction:**

~\$514/lb.TP/yr

## **Status:**

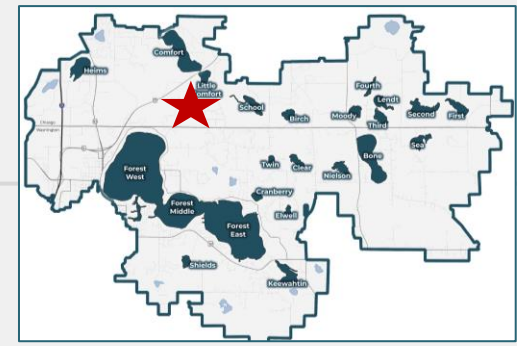
The project is complete. System calibration and fine tuning will be ongoing for the first year of operation. **Project close out to occur at the December board meeting** – waiting on closeout documents from contractor.



Project overview



# Little Comfort Lake Subwatershed Enhancement



## **Project:**

Wetland stormwater outflow treatment

## **Project Phase 2:**

Feasibility

## **Benefit:**

~78 lbs phosphorus per year

## **Lifetime cost per pound phosphorus reduction:**

TBD

## **Status:**

Feasibility phase pivoting to alternative projects. Landowner outreach, project conceptualization, and phosphorus reduction modeling/estimates underway. Land appraisal to take place in December.



Little Comfort Lake drone footage