



Lower St. Croix Watershed Partnership

January 11, 2024 Regular Board Meeting

Emily Heinz, Planning Coordinator



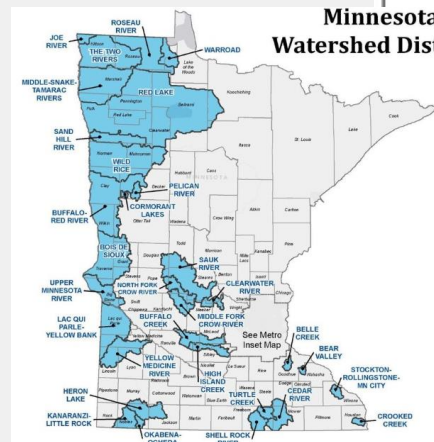
What is One Watershed One Plan? (1W1P)

Purpose:

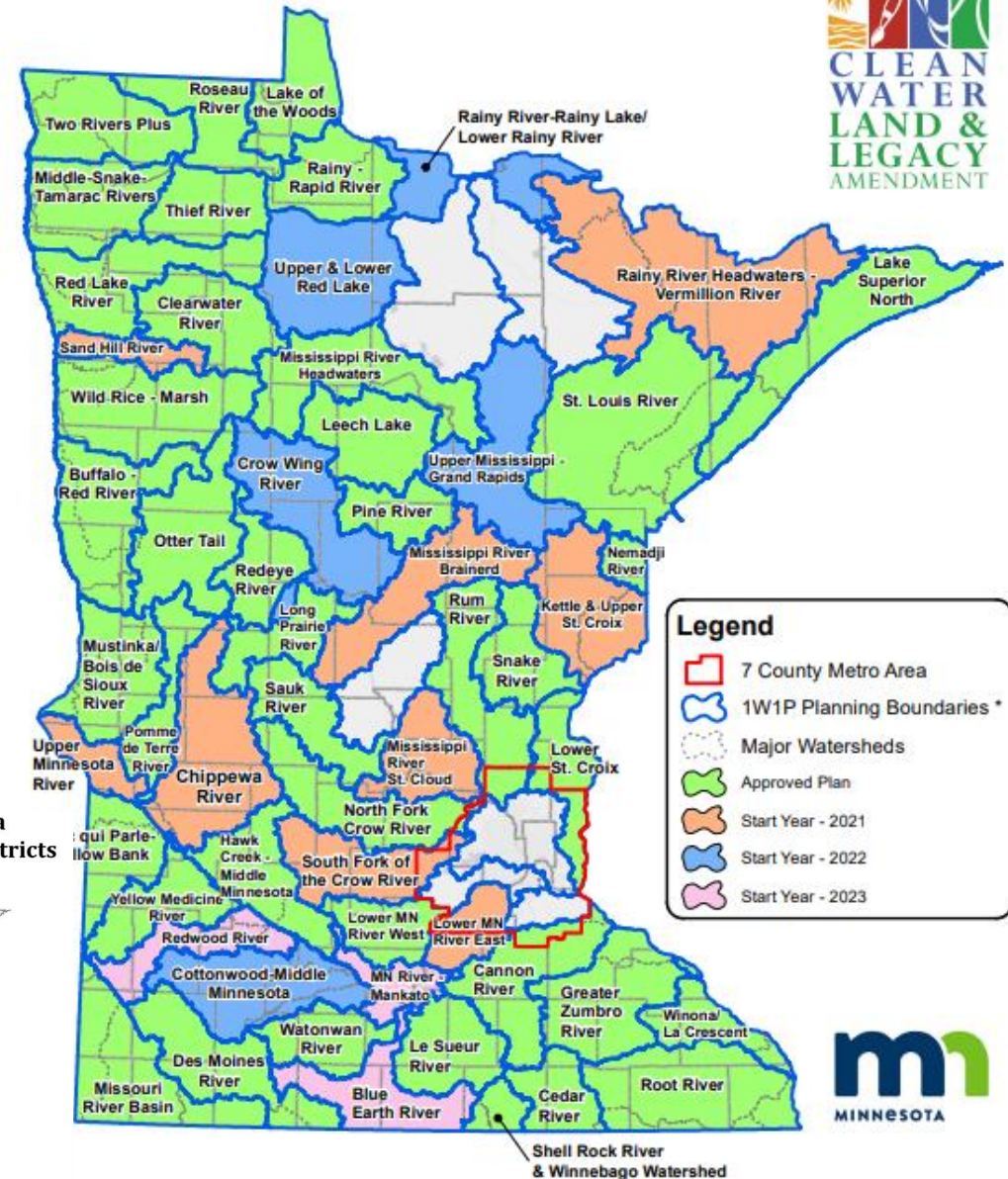
- **Align** local water planning under statutes 103C and 103D
- Create a systematic, **watershed-wide**, science-based approach to watershed management;
- Build off existing local government procedures/data
- Focus on **prioritized** and **targeted** actions, **measurable** progress
- Serve as a substitute for a local comp plan, if appropriate

More info: <https://bwsr.state.mn.us/one-watershed-one-plan>

Comfort Lake-Forest Lake Watershed District | **LSC Partnership**



One Watershed, One Plan Participating Watersheds



aries; intended for planning purposes through One Watershed, One Plan only.



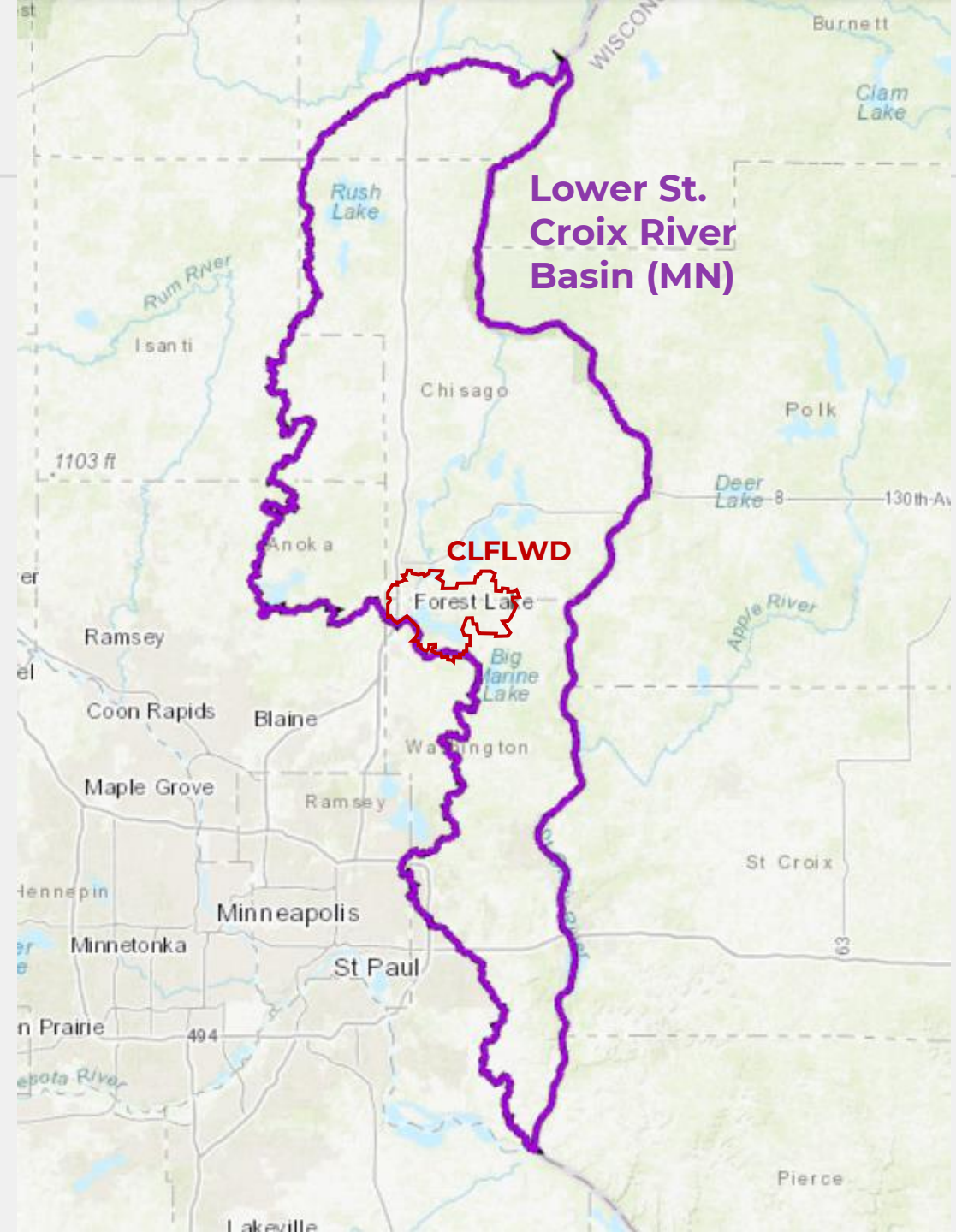
Lower St. Croix River Basin

15 partners include:

- [Anoka Soil and Water Conservation District](#)
- [Brown's Creek Watershed District](#)
- [Carnelian-Marine-St. Croix Watershed District](#)
- [Chisago County](#)
- [Chisago Soil and Water Conservation District](#)
- [Comfort Lake-Forest Lake Watershed District](#)
- [Isanti County](#)
- [Isanti Soil and Water Conservation District](#)
- [Middle St. Croix Watershed Management Organization](#)
- [Pine County](#)
- [Pine Soil and Water Conservation District](#)
- [South Washington Watershed District](#)
- [Valley Branch Watershed District](#)
- [Washington County](#)
- [Washington Conservation District](#)

More info: <https://www.lsc1w1p.org/our-partners>

Comfort Lake-Forest Lake Watershed District | **LSC Partnership**





Lower St. Croix Partnership Timeline



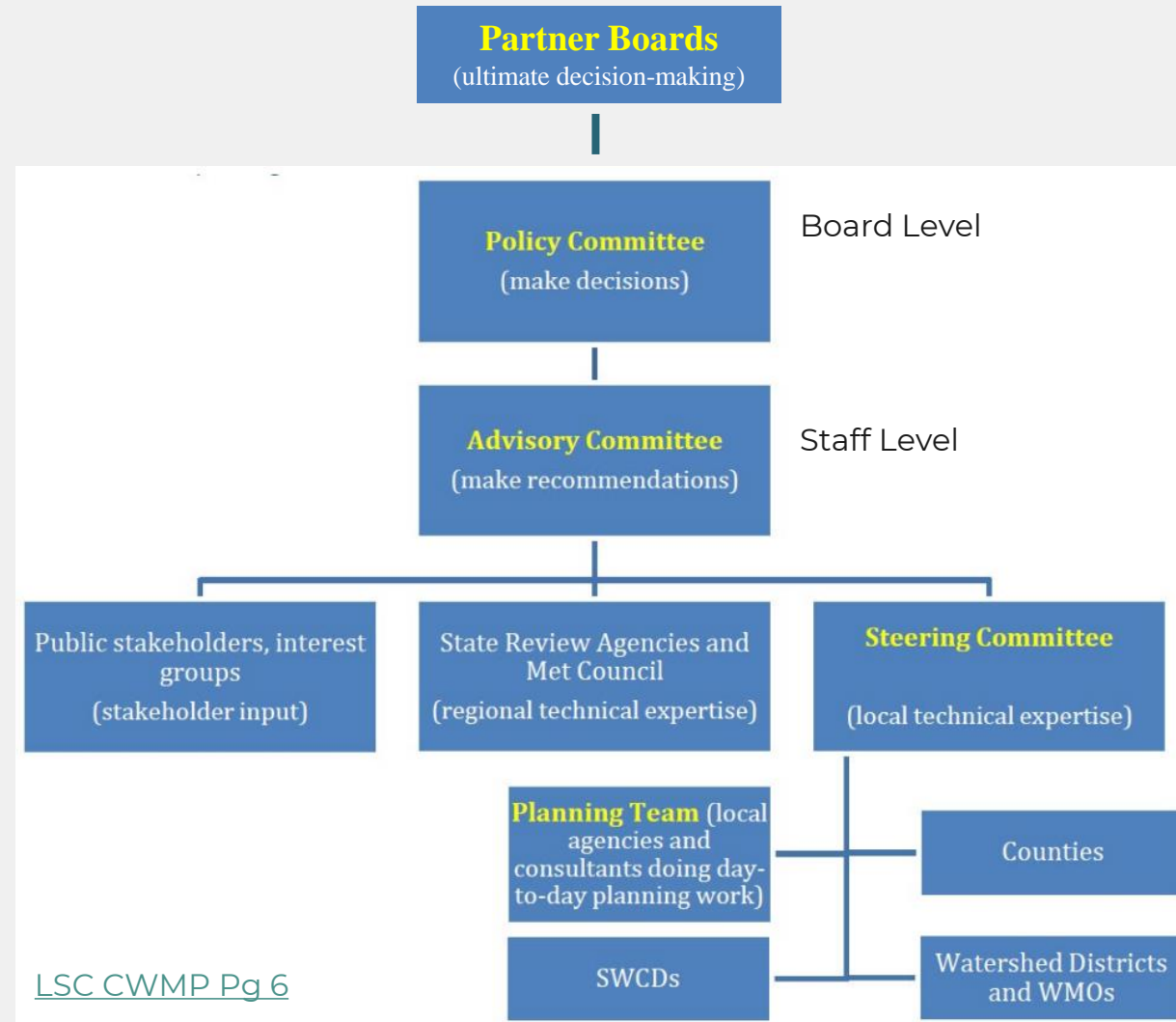
*WBIF = Watershed Based Implementation Funding
(subsection of Clean Water Fund state grant program)*



Lower St. Croix Partnership Structure

- LSC operates under a Joint Powers Agreement (JPA)
 - not a Joint Powers Entity (JPE)
- Actions must be taken by each partner board, rather than the Policy Committee acting as its own board
 - E.g., approving work plans, amendments

More info: <https://www.lsc1wlp.org/transition-documents>





WBIF Funding Allocation Process

State allocates biennial grant amount for

- 1) Metro portion of LSC
- 2) Non-metro portion of LSC

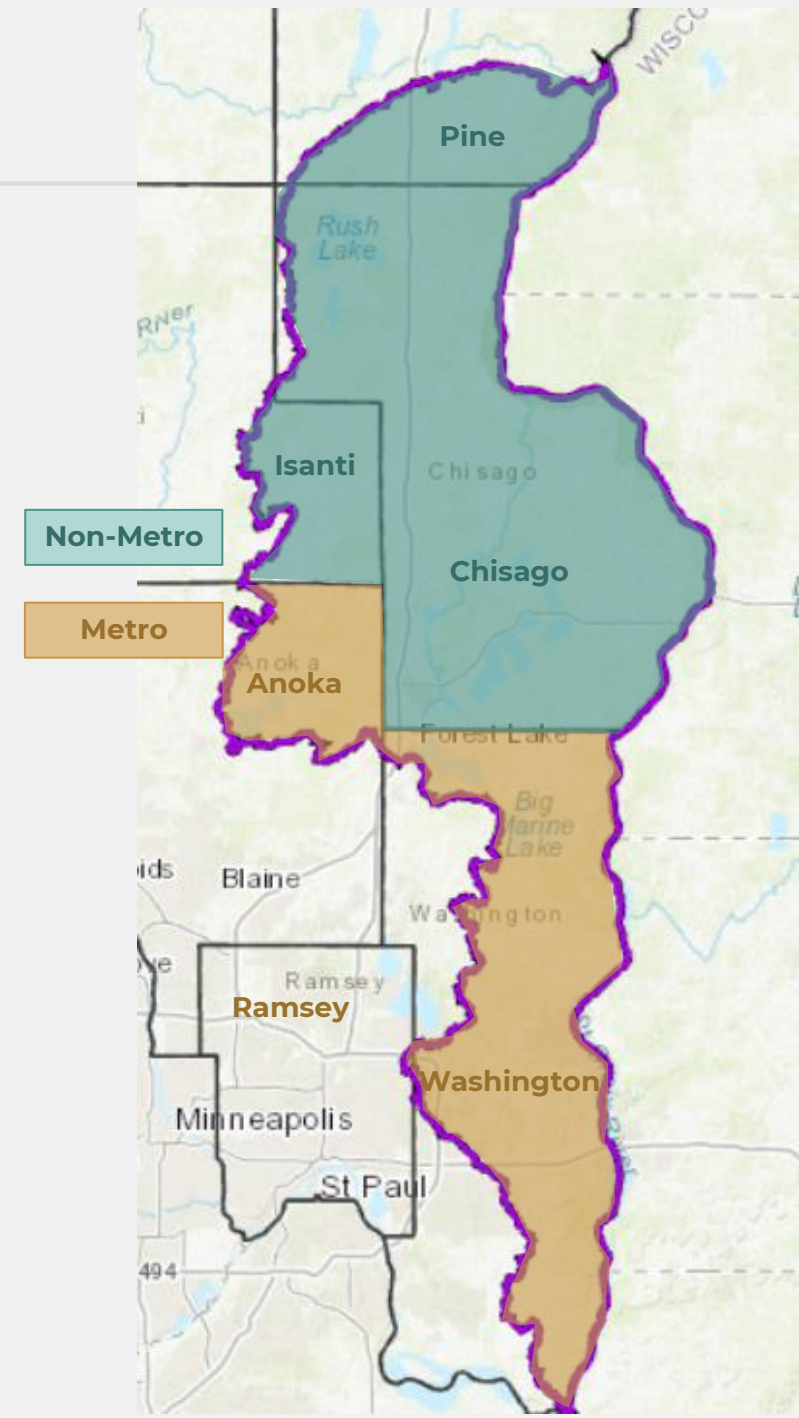


Partnership holds convene meeting to decide

- 1) Pool metro + non-metro funds, or
- 2) Keep separate



Past two years, funds have been pooled and distributed according to process determined by LSC Partnership

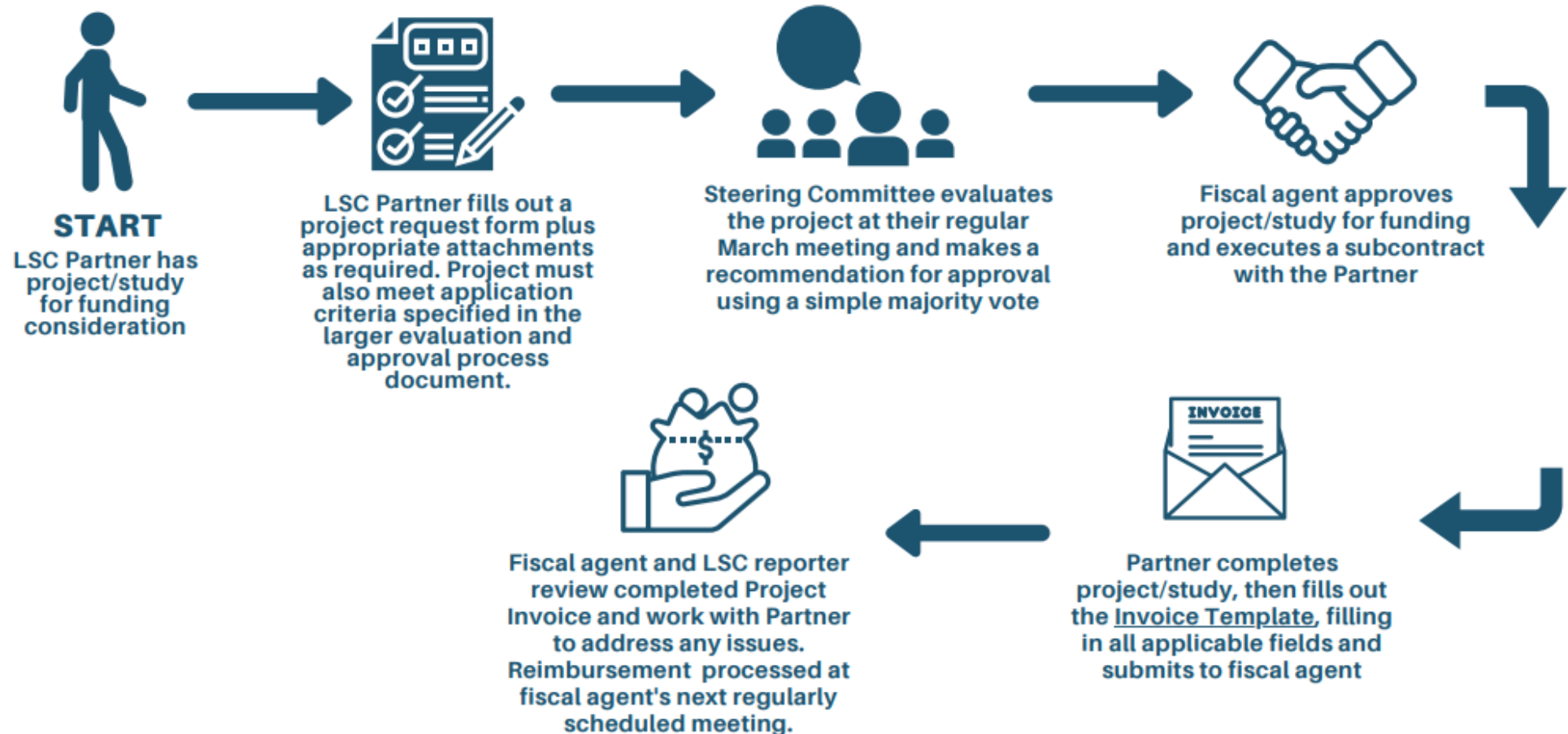


Review process for proposed WBIF projects **under \$50,000**

Please refer to the document "WBIF Proposed Project Evaluation and Approval Process for the Lower St. Croix Watershed Partnership" for additional details.



Project Application Deadlines: 2 weeks before the scheduled February, May and August Steering Committee meetings (specific deadline dates will be included in annual December call for projects)

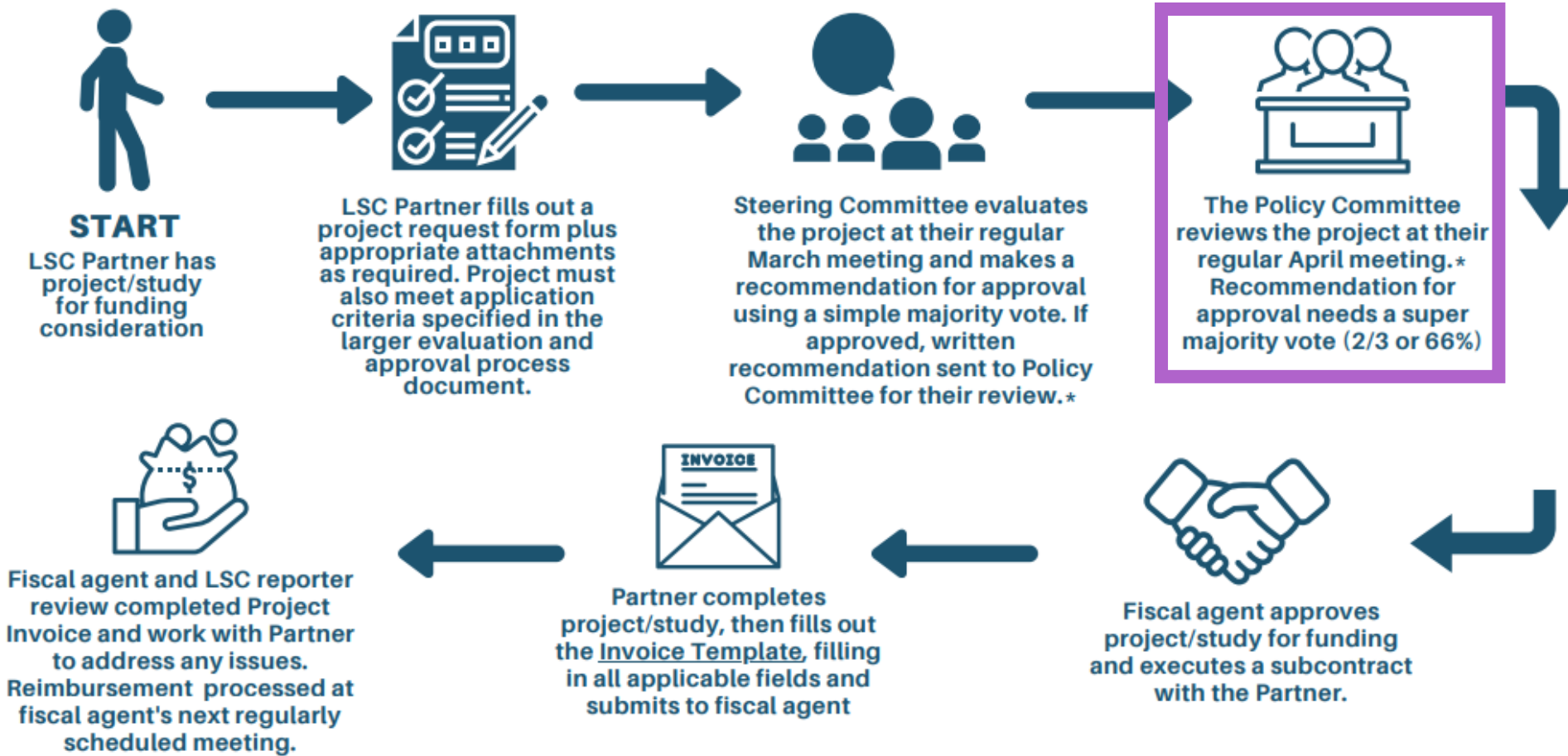


Review process for proposed WBIF projects $\geq \$50,000$

Please refer to the document "WBIF Proposed Project Evaluation and Approval Process for the Lower St. Croix Watershed Partnership" for additional details.



Project Application Deadline: 2 weeks before the scheduled March Steering Committee meeting (specific deadline date will be included in annual December call for projects)



*See evaluation and process document for discussion around non-recommended projects.



WBIF Grant Approval Process

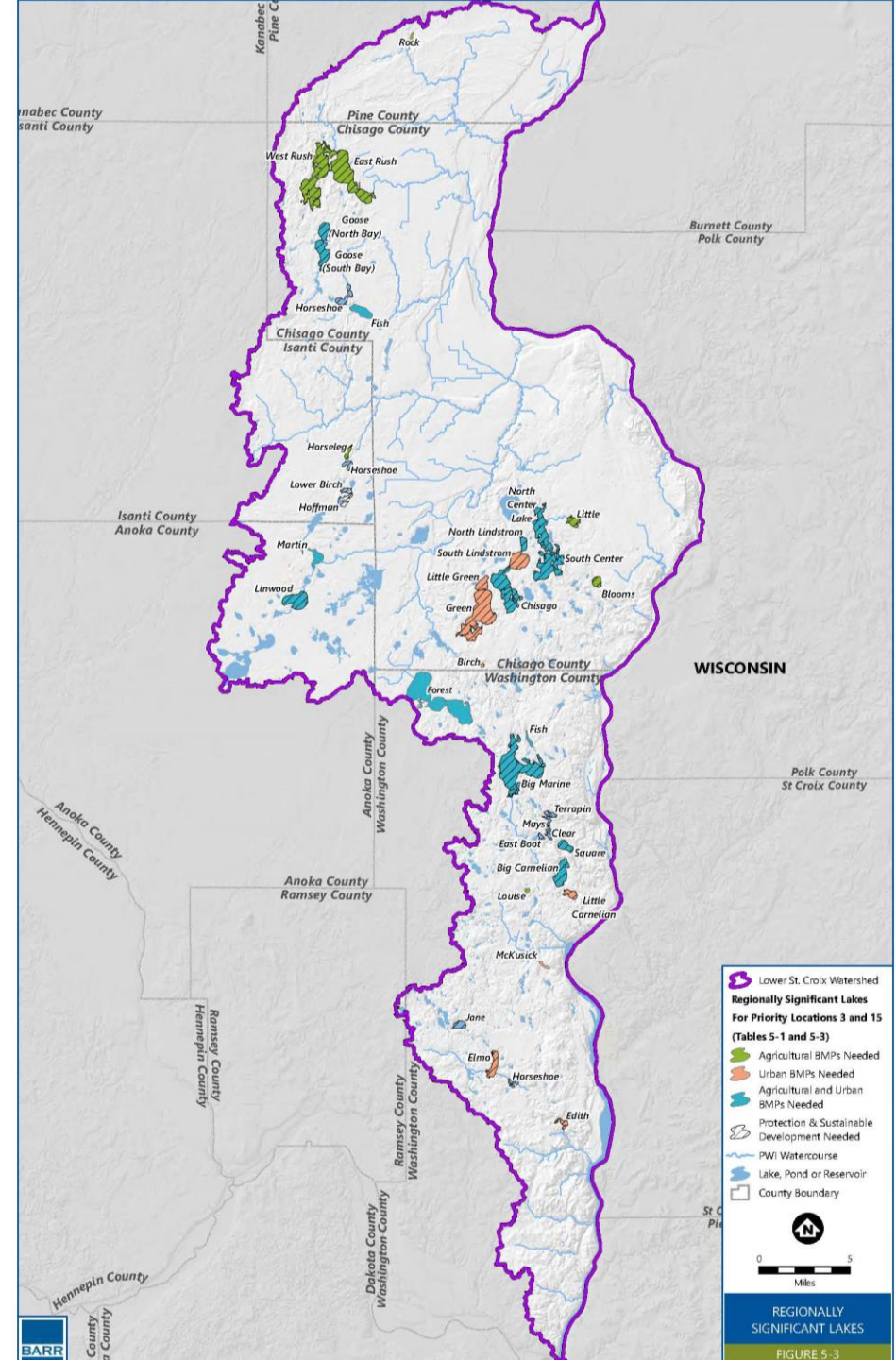
- Grant isn't "competitive" like CWF Projects & Practices program
- Not intended to be "first-come-first-serve" either
- Policies try to put emphasis on
 - Prioritized, Targeted, Measurable
 - Ties back to LSC Comprehensive Watershed Mgmt. Plan
- WBIF Project Request Forms and Templates:
 - Project Request Form Template
 - Attachment 1 - Project Review Process
 - Attachment 2 - CWMP Priority Waterbody Maps
 - Attachment 3 - CWMP Appendix C Scoring Matrix
 - Attachment 4 - Wetland Restoration Scoring Matrix
 - Attachment 5 - Internal Analysis Request for Funding
 - Attachment 6 - Internal Analysis Selection Criteria
 - Attachment 7 - Targeting Analysis Eligibility Criteria

More info: <https://www.lsc1w1p.org/plan-forms>

<p style="text-align: center;"><u>January</u></p> <p>1/5 Deadline:</p>	<p style="text-align: center;"><u>February</u></p> <p>2/14 Deadline: project requests <\$50K submitted to meeting facilitator (2 weeks before SC meeting)</p> <p>2/28 Steering Committee: at regular monthly meeting consider project requests <\$50K</p>	<p style="text-align: center;"><u>March</u></p> <p>3/8 Notice: Meeting facilitator will send out call for projects reminder to all partners 60 days in advance of the May application <u>deadline</u></p> <p>3/13 Deadline: project requests ≥\$50K submitted to meeting <u>facilitator</u></p> <p>3/27 Steering Committee: at regular monthly meeting review project requests ≥\$50K that are due to come to PC in April</p>
<p style="text-align: center;"><u>April</u></p> <p>4/15 Deadline: Policy Committee meeting packet posted, including project requests ≥\$50K</p> <p>4/22 Policy Committee: at regular quarterly meeting consider project requests ≥\$50K once per <u>year</u></p>	<p style="text-align: center;"><u>May</u></p> <p>5/8 Deadline: project requests <\$50K submitted to meeting facilitator (2 weeks before SC meeting)</p> <p>5/22 Steering Committee: at regular monthly meeting consider project requests <\$50,000</p>	<p style="text-align: center;"><u>June</u></p> <p>6/14 Notice: Meeting facilitator will send out call for projects reminder to all partners 60 days in advance of the August application <u>deadline</u></p>
<p style="text-align: center;"><u>July</u></p>	<p style="text-align: center;"><u>August</u></p> <p>8/14 Deadline: project requests <\$50K submitted to meeting facilitator (2 weeks before SC meeting)</p> <p>8/28 Steering Committee: at regular monthly meeting consider project requests <\$50,000</p>	<p style="text-align: center;"><u>September</u></p>
<p style="text-align: center;"><u>October</u></p>	<p style="text-align: center;"><u>November</u></p>	<p style="text-align: center;"><u>December</u></p> <p>12/13 Notice: LSC partner staff will send out call for projects reminder to all partners 60 days in advance of the February application deadlines (dual notice this month – projects less than and greater than \$50K)</p>

Criteria and Points for Ranking Agricultural and Urban BMPs for Watershed Based Funds as referenced in Section VII.B.

1	Lake Restoration & Protection	The project addresses total phosphorus on a priority lake (See table on page 2)	LPSS Priority Class* is "Impaired" or "Highest" = 5 LPSS Priority Class is "High" or "Higher" = 3
Can score points for #1 or #2, but not both.			
2	Stream Restoration	Project is located near stream reach and will address stream impairment or Lake St. Croix total phosphorus impairment)	Within ¼ mile = 5 Within ½ mile = 3
3	Groundwater	Project improves groundwater quality/quantity (examples: soil health, nutrient management, pesticide reduction, recharge, infiltration, reuse)	Yes = 3 No = 0
4	Readiness	Concept plans, cost estimates, and landowner agreements/easements are complete 3 or 0	Yes = 3 No = 0
5	Urgency & Opportunity	Is the project contingent on securing funding now? (Example, BMP is part of a larger project that will move forward with or without the BMP; opportunity would be lost if not funded and implemented now)	Yes = 1 No = 0
6	Cost effectiveness	Level of cost benefit when compared to all projects analyzed in particular SWA or similar targeting analysis.	Top 1% = 10 Top 10% = 7 Top 25% = 5 Top 50% = 3 < 50% = 0
7	Partners & Funding	Partnership and collaboration with agencies, organizations, or other groups is being leveraged or utilized by this project (Are there multiple partners providing funding, in-kind support, or other assistance or involvement?)	Yes = 1 No = 0
8	Multiple Benefit	Project provides added benefit of habitat improvements (aquatic, riparian, upland, wetland). Note: water quality improvements are not considered habitat improvements for this criterion.	Yes = 1 No = 0
9	Multiple Benefit	Project provides added benefit of education (examples: signage, demonstration project)	Yes = 1 No = 0
10	Multiple Benefit	Project improves water quality while also addressing flooding concern (examples: pond, wetland restoration, or floodplain expansion)	Yes = 1 No = 0
TOTAL POINTS POSSIBLE			26





LSC WBIF Grants & Work in CLFLWD

Two implementation grants have been awarded to the Lower St. Croix Partnership so far.

- FY21 WBIF Total: \$1,264,531 (Metro + Non-Metro)
- FY23 WBIF Total: \$1,278,579 (Metro + Non-Metro)
- FY25 WBIF not yet awarded, \$1,266,380 (Metro) + \$778,691 (Non-Metro) = \$2,045,071 (WBIF total) (convene mtg TBD)

Funds rec'd by CLFLWD = \$333,649

- Sunrise River Project: \$300,449
- Forest Lake Internal Load Assessment: \$16,500
- Wyoming Enhanced Street Sweeping Study: \$5,700
- Diagnostic Monitoring Protocols: \$3,000
- Admin/Reporting Assistance: \$8,000

Carnelian-Marine-St. Croix WD and WCD completed the Scandia Enhanced Street Sweeping Study





Upcoming Work

Metro Convene Mtg

Metro partners meet and decide to pool FY25 WBIF grant funds or not to pool

2023 Yearend Reporting

Partners submit reporting to Keystone Waters – report out on WBIF grants and broader Comp. Plan

Project Tracker

BWSR state-wide initiative to help TWIP partnerships track and report progress on Comp. Plans